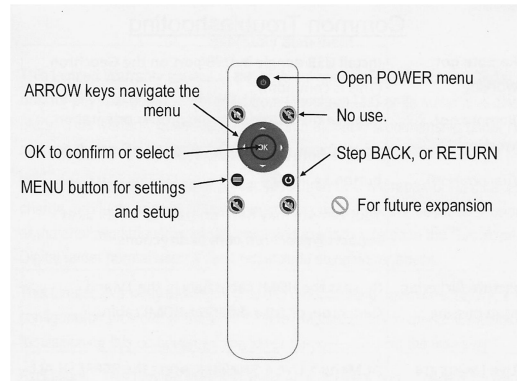


# BRG Geochron Time Zone Clock Quick Start Guide - Wi-Fi (3/4/21)

The BRG Geochron Time Zone Display is comprised of three main components, 1. The LED time zone display, 2. The 4K LED/LCD video display, 3. The internal Geochron video controller that drives the moving map display.

## Powering On the Moving Map Display

Plug the display and the moving map into power before hanging the clock. If the moving map display does not turn on, turn it on using the button located on the back of the display. Disconnect the power cords from the wall without turning off the moving message display. Plug the power cords into the location where the display is to be mounted, then mount the display.



## Configuring Wi-Fi

The time zone clock and the moving map display each have their own Wi-Fi interface. Wi-Fi is used for both configuration and obtaining time updates. If the digital time zone display will not be reconfigured, then its' Wi-Fi does not need to be configured at this time. The digital time zone display will maintain accurate time for over 20 years without external or manual time updates. The moving map display Wi-Fi also does not need to be configured immediately; however, more features are available if it is configured to access the network.

To configure the digital time zone Wi-Fi:

1. Using a cell phone, go to Settings, Wi-Fi, then look for Wi-Fi access point nwts-conf and click on it. A selection page should popup.
2. Click on the "Configure Wi-Fi" button. Configure the clock to the desired network and click on "Save"

To display the IP and MAC addresses, press and hold "Mode" on the time zone remote control. The display zone 1 will flicker for several seconds, then slowly start counting up. When the count reaches 9, then release the button.

To configure the moving map Wi-Fi:

1. Press the Menu button on the Geochron remote
2. Using the arrow buttons on the remote, navigate to the Internet tab. Use the navigation buttons to move to the Internet Mode and select Wi-Fi.
3. Move to the desired network and select Connect and enter the requested network details.

Two or more remote controls are included with the clock. Pull the plastic tab on the remote controls to activate the remotes. The moving map remote control button functions is pictured below. If the Power button is used to power down the display, then the Clock remote must be used to turn the display back on. Using the clock remote, momentarily press either "Change Start" or "Change End" buttons.

## Auto Display Power Control

To extend the life to the video display, the display powers off at 9:00 pm local time and turns on at 6:00 am local time. This time frame may be adjusted or disabled. The LED time zone display will remain powered on during this period.

## Reconfiguring the LED Time Zone Display

A variety of methods are available for reconfiguring the time zone display including, the remote control provided, control program over the network, and optional touch screen IR remote control. Instructional videos are available at <https://www.brgprecision.com> . Documentation is available at <https://www.brgprecision.com/support/documentation.php>

Customer service: 800-295-0220 or 316-788-2000