

BRG Geochron Time Zone Clock Quick Start Guide – Wired (3/4/21)

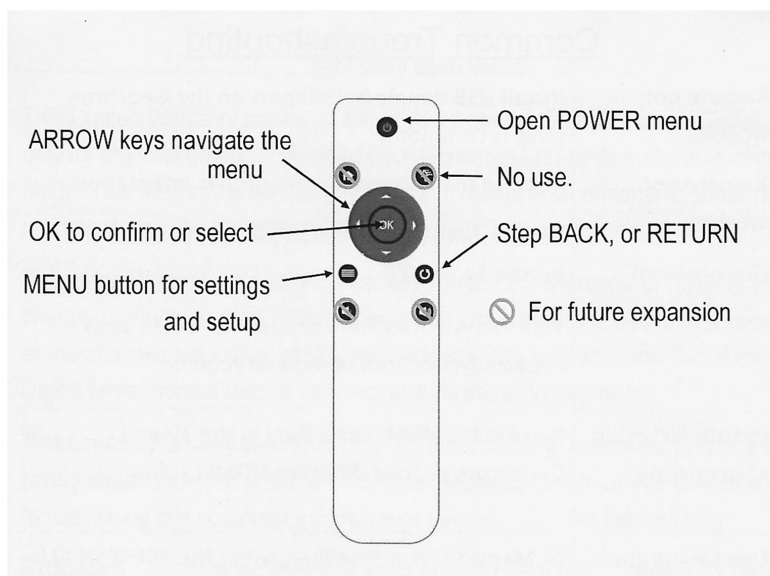
The BRG Geochron Time Zone Display is comprised of three main components. 1. The LED time zone display, 2. The 4K LED/LCD video display, 3. The internal Geochron video controller that drives the moving map display.

Important – If the customer specified that the BRG Geochron is not to include operating Wi-Fi or Bluetooth radios, then the Wi-Fi radio is disabled in the configuration screen and the radio for the Bluetooth remote control has been removed and placed in the battery compartment of the Geochron remote control. To enable the remote control, remove the cover of the Geochron video driver box on the back of the display. Then remove the USB dongle from the remote control battery compartment and insert it into the video controller USB slot furthest away from the power plug. Replace the cover of the Geochron driver box. Insert batteries into the remote control

Powering On the Moving Map Display

Plug the display and the moving map into power before hanging the clock. If the moving map display does not turn on, turn it on using the button located on the back of the display. Disconnect the power cords from the wall without turning off the moving message display. Plug the power cords into the location where the display is to be mounted, then mount the display.

Two or more remote controls are included with the clock. Pull the plastic tab on the remote controls to activate the remotes. The moving map remote control button functions is pictured below. If the Power button is used to power down the display, then the Clock remote must be used to turn the display back on. Using the clock remote, momentarily press either “Change Start” or “Change End” buttons.



Connecting the Geochron Moving Map display to the computer network

A network connection is not required to maintain time on the time zone display or for the moving map to function. The time zone clock will maintain accurate time for the life of the display without the need for manual or external time updates. However, a network connection will provide additional functionality.

Press the MENU button on the remote to display the configuration menu. Use the navigation ARROWS to move to the Internet tab. Press the down ARROW to move to the Internet Mode. Use the left and right ARROWS to move to Wi-Fi, Wired, or OFF. Press the OK button to select the desired connection. If Wired connection is selected, use the Clock remote and momentarily press either “Change Start” or “Change End” to restart the Geochron moving map.

Auto Display Power Control

To extend the life to the video display, the display powers off at 9:00 pm local time and turns on at 6:00 am local time. This time frame may be adjusted or disabled. The LED time zone display will remain powered on during this period.

Reconfiguring the LED Time Zone Display

A variety of methods are available for reconfiguring the time zone display including, the remote control provided, control program over the network, and optional touch screen IR remote control. Instructional videos are available at <https://www.brgprecision.com> . Documentation is available at <https://www.brgprecision.com/support/documentation.php>

Customer service: 800-295-0220 or 316-788-2000