

Analog Clocks



HP12A
12" Brushed
Aluminum



HP12P
12" Black
Polycarbonate



HP15A
15" Brushed
Aluminum



HP15P
15" Black
Polycarbonate



HP22P
22" Black
Polycarbonate

- Accurate to 1 second in 20 years (2 ppb)
- Clocks include multi-processor movements
- Factory synchronized with the Atomic Clock
- No expensive master clock required
- Automatic Daylight Savings change (if enabled)
- Automatic Leap Second correction (if enabled)
- Supports all world time display rules
- Ideal replacement for wired synchronized clocks
- Quick correction for time changes (max 4 minutes)
- Energy efficient: - 1 watt
- Power options include 100-265 VAC & 12-14 AC/DC
- No custom back box required
- Security mounting bracket hardware available
- Assembled in the U.S.A.

- **Factory Synchronized**
- **No Master**
- **Low Maintenance**
- **Adjusts for DST**
- **Accurate for 20 years**



For more information
contact:



800-295-0220
Sales@BRGProducts.com

BRG
PRECISION
PRODUCTS
600 N River St
Derby, KS 67037
800-295-0220 Fax: 316-788-7080
sales@brgproducts.com
www.BRGPrecision.com



DuraTime HP

Factory Synchronized Clock System

The DuraTime HP Factory Synchronized Clocks are stand-alone clocks with incredible accuracy. No need for a master clock, Ethernet connection, GPS antenna, or CDMA time receiver. Simply plug them into electricity and they are accurate to 1 second over 20 years. Using an ultra-high accuracy OCXO Oscillator, these clocks are synchronized at the BRG Factory to the US Atomic Clock. These clocks automatically adjust for daylight savings time.



Highlights

- Accurate to 1 second in 20 years (2 ppb)
- Factory synchronized with the Atomic Clock
- No expensive master clock required
- Automatic Daylight Savings change (if enabled)
- Automatic leap second correction (if enabled)
- Includes 20 year backup battery that maintains the correct time during a power interruption
- Supports all world time display rules
- Ideal replacement for wired synchronized clock systems
- Factory configured, no further configuration required
- No GPS, network connection, sync wire or radio required to receive time
- Easy installation
- Low maintenance
- No FCC license required
- Available in:
 - 2.5", 4.0", 7" or 12" bar segment LEDs or 1.2", 2.0" & 4" dot matrix LEDs
 - 4 & 6 digit configurations
 - User changeable Multi-color LEDs (Red, Green, Blue, Yellow, Magenta, Cyan & White)
 - Double sided configurations with ceiling or wall mounting brackets
 - 15" or 22" analog clocks
- Handcrafted in the U.S.A.
- Patents Pending

Digital Clocks

Bar Segment LED Clocks



2.5" bar segment LEDs



4.0" bar segment LEDs



7.0" bar segment LEDs



12.0" dot matrix LEDs

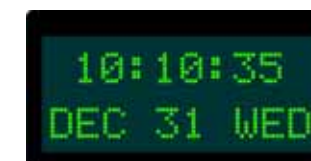
- 2.5" & 4" LED sizes
- 4 & 6 digit units
- User changeable Multi-color LEDs (Red, Green, Blue, Yellow, Magenta, Cyan & White)
- Attractive black plastic case

- 8" bar segment LED sizes
- 12" dot matrix LED sizes
- 4 & 6 digit units
- User changeable Multi-color LEDs (Red, Green, Blue, Yellow, Magenta, Cyan & White)
- Black Aluminum frame

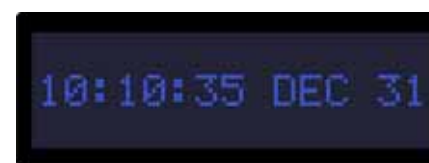
Alphanumeric LED Clocks



2.0" dot matrix LEDs



1.2" dot matrix LEDs



15 character 1.2" dot matrix LEDs



10 character 1.2" dot matrix LEDs

- 1.2" & 2" dot matrix LED sizes
- 5, 10 or 15 character dot matrix LED sizes
- User changeable Multi-color LEDs (Red, Green, Blue, Yellow, Magenta, Cyan & White)
- Black plastic frame

HANDCRAFTED
IN THE USA