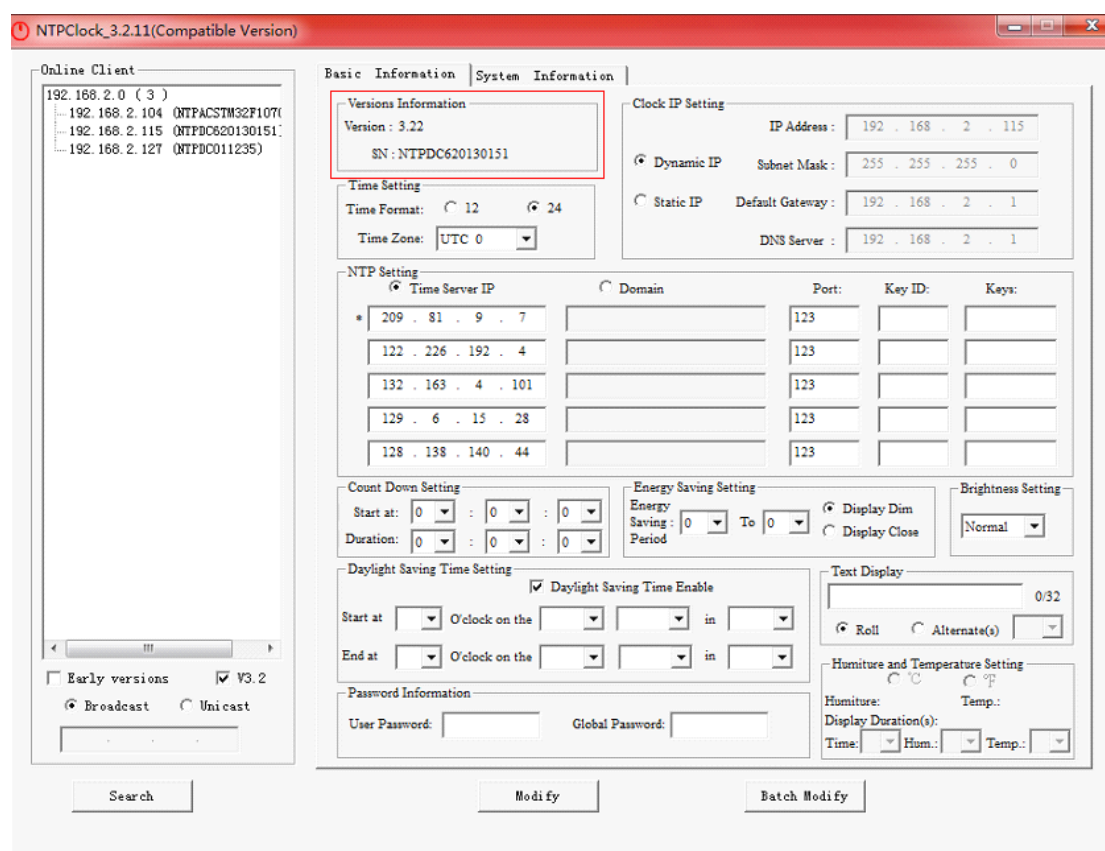


NTP Clock V3.2.11 User Manual

The Version 3.2.11 can search the early version or V3.2 online client or both of them by broadcast (255.255.255.255) or unicast. The default search method is broadcast. You can modify clock parameters individual by [modify] or en-masse by [batch modify]. The [modify] can change all parameters include clock IP address while the [batch modify] not change the clock IP address. The modification of clock parameters should require a correct User password or Global password. The default user password is “admin” and the default global password is “globalpw”. Also this software can help you update the terminal device without any physical device. You can find this function under ”System Information”.

The software interface is shown as following:



1. Searching the online terminal device by [Broadcast] or [Unicast]

1.1 Broadcast

Open the software, check the ”Broadcast”, click” Search” button then the software will search all the online terminal device automatically. The IP address will be displayed and classified by network segment. The figure in the bracket indicates the numbers of the online terminal device. Such as the above figure, 192.168.2.0 indicates the network segment, “(3) “ indicates the numbers of the online host, 192.168.2.104 indicates the online host IP address.

1.2 Unicast

Open the software, check “Unicast” and input the initial IP address that you want to search, click “search” then the clock will be displayed from the initial IP until the last one. Please input 192.168.3.0 if you want to search all terminal device on the 192.168.3.0 network segment. After clicking “search” the software will automatically find all terminal device from 192.168.3.1 until the last IP 192.168.3.254.

After searching finished, the IP will be classified to the same network segment and displayed from small to big. The figure in the bracket indicates the numbers of the online terminal device.

2. Inquiring and modifying the configuration information

2.1 Inquiring the clock configuration information

When the online device is found then click “ Basic Information”. After selecting one IP address on the left the selected clock parameters will be displayed on the right. You can inquire and modify the parameters according to your demands.

2.2 Modifying the clock configuration information

2.2.1 You need to select one clock IP, and then you can modify the clock parameters according to your demands. First modify the clock parameter, and then please input the correct “ User Password” and last click “ Modify ”. The default user password is “admin”.

Note: A message box will display and declare the parameters have been changed successfully. This function is valid to the firmware version 3.21 or higher. But it is not valid to the Version 3.20.

2.2.2 If you want to modify the clock parameters en-mass. Firstly selecting one clock IP and then do the modification as your demand. First modify the clock parameter, and then please input the correct “Global Password” and last click “Batch Modify”. After the modification is finished, a message box will declare you the number of clocks that have been modified successfully. The default global password is “globalpw”.

3. Password Modification

3.1 Checking“User Password Setting” or “Global Password Setting” under the “System Information”. First select the clock IP which you need to modify its password, and then input the relevant password that required and last click “Modify”.

Note: A message box will display and declare the parameters have been changed successfully. This function is valid to the version 3.21 or higher. But it is not valid to the Version 3.20.

3.2 This software also can support the modification of user password or global password en-mass. The step is almost the same as above but the difference is you need to click “Batch Modify”. The software will declare you the number of terminal device that have been modified successfully.

4. Client software update online

4.1 Checking the box of “Update Control” under the “System Information”. Once you select the relevant clock IP on the left then the IP address and MAC Address will be displayed in the input box automatically. Then click “...” button to find the file used to update the software. Please click “Modify” when the file is found and then the software will be updated. Please note that you can not break this process until the update is finished. A message box will show you that the software is updated successfully.

If you want to update the clock that is not existed in the software you can do it as following:

- 1) Click “Search”
- 2) Check the box of “Update Control” under the “System Information”, and then input the clock IP address or the broadcast IP of the subnet that the clock is located in. (Usually the broadcast IP is xxx.xxx.xxx.255, but please be sure that the software and the clock is on the same network segment.)
- 3) Input the MAC address
- 4) Click the button “...” to find the file which used for the software update
- 5) Click “Modify” to enter into updating.

4.2 If you want to update all terminal device at once you can do it as following:

- 1) Click “Search” to find all terminal device.
- 2) Click the first IP address of the left listing or the network segment then the software will automatical update all terminal device begin from the selected IP address until the last one .
- 3) Click the button “...” to find the file which used for the software update.
- 4) Click “ Batch Modify” to enter into updating until the last terminal device is updated.

If you want to break the update process you can click “Break” button. After the current terminal device is updated then the software will no longer carry out the next update task.