

Multimedia 2007 Software User Manual

General information

Screen layout and overview -----

Beginning Text Messaging

Get system information -----	3
Select communication mode -----	3
Create text -----	4
Insert Extra Text -----	6

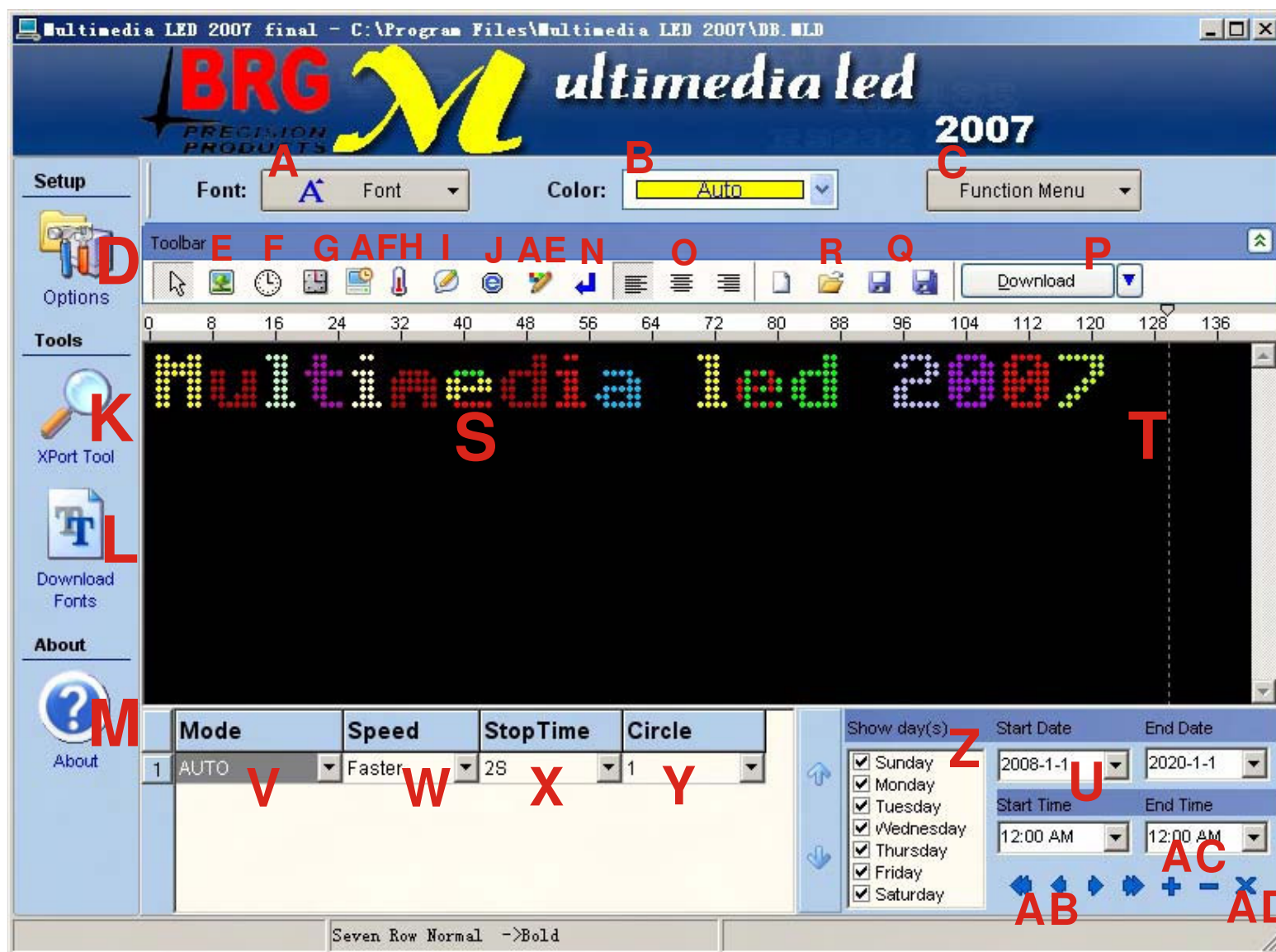
Advanced Text Messaging

Insert Bitmap file -----	7
Insert real-time clock -----	8
Insert countdown -----	9
Insert count-up -----	10
Insert temperature -----	10
Insert symbol -----	11
Pre-define message show day(s) and time -----	12
Pre-define power on/off -----	13
Adjust brightness -----	14
Set password -----	15
Preview -----	16
Send messages to sign(RS232 communication) -----	17
Send messages to group of signs(RS485 communication)-----	18
Send messages to sign(TCP/IP communication) -----	20
Make font -----	23
Update firmware -----	25
Set circle play of messages -----	26

General Information

Messaging software allows you to send message from a PC to your sign. After you install the Messaging Software and start it up, then you can see as below:

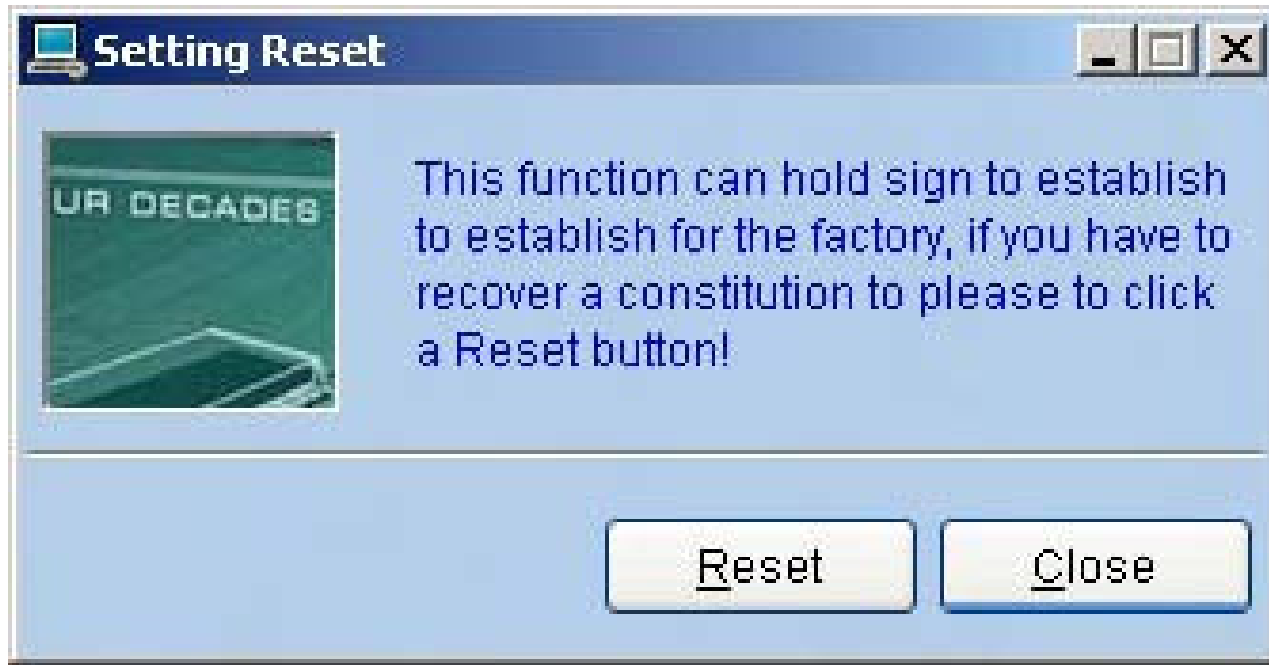
Screen layout and overview



A--Font: From five rows to 31 rows in Height	B--Color: 12 color available , Full color available.
C--Function Menu: Include “Preview ”: to preview the effect of message on sign; “Multimedia Download ”: used for TCP/IP or RS485 communication; “Image Edit ”: used for creating images; “Font Make ”: used for creating fonts; “Language Editor ”:used for creating new languages of software . “Language ”:you can select the language of software. “Fonts ”:you can select the font. “Check for a new version ”: used to get update software news. “Run when windows start ”:select this ,the software will run with your pc.	D--Options: In this menu, you can set parameters, such as communication mode, Brightness, power on/off time, password, screen number, etc.
H--Insert temperature: Insert temperature. <u>(Note: needs extra hardware to work)</u>	E--Insert Bitmap: Insert graphics created in “ Image Edit ” .
J--Insert symbol: Insert pre-defined symbols.	F--Insert “date time”: Insert real-time clock.
L--Download Fonts: 8 fonts available: (Note: After you update firmware or create new Fonts on this software, you must click it.	G--Insert countdown: Insert countdown time and date.
N--New Line: Click it to stat a new line. (Note: You must set this function under “Environment Setup ”in “Options ”)	I--Insert variable: Insert variable.
P--Download: Send messages to sign.	K--X-Port Tool: Used for searching or editing IP Address of sign.
R--Open: Open *.mld file created on this software from PC.	M--About: Get information about this software.
T--Align line: Measure whether of not length of message on software beyond real length on sign.	O--Align: Include Align Left/Right/Center.
V--Mode: 28 modes available.	Q--Save as: Save *.mld file created on this software onto pc.
X--Stop Time: 10 stop time available.	S--Messaging window: Type messages here.
Z--Show days: Pre-define show day(s) of messages/ (Note: need set up the “expand mode ”under “Led mode ”and “play on time ”under “select play mode ”in “Option ”.	U--Start Show Time/End Show Time: Pre-define message start and end time. (Note: need set up the “expand mode ”under “Led mode ”and “play on time ”under “select play mode ”in “Option ”.
AC--Insert/cancel record: Insert or delete message files.	W--Speed: 5 speed available.
AE--Insert Extra Text: You can edit Multi-countries language.	Y--Circle (Repeat Page)
	AB--Prior/Next record: Make switch between message files.
	AD--Post/cancel edit: Save message file onto software or cancel message file.
	AF--Insert count up: Insert “count up” time and date.

Press “Ctrl+F4” on keyboard, you see the picture:

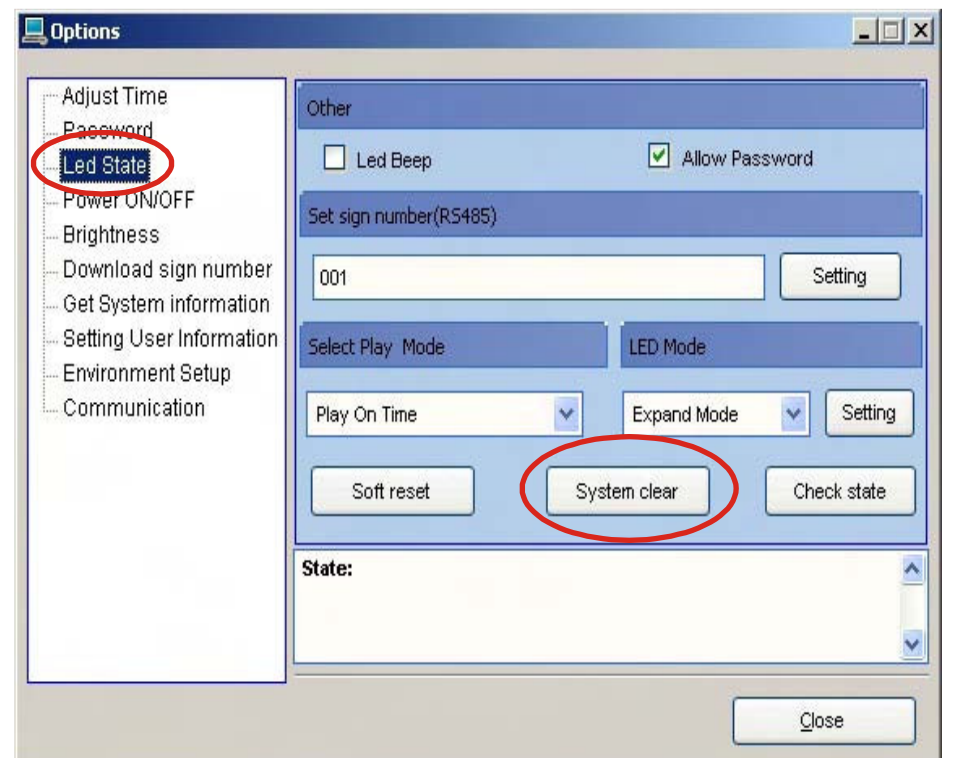
This is the formatting the plate. **Contact Tech Support before Using this Function.**



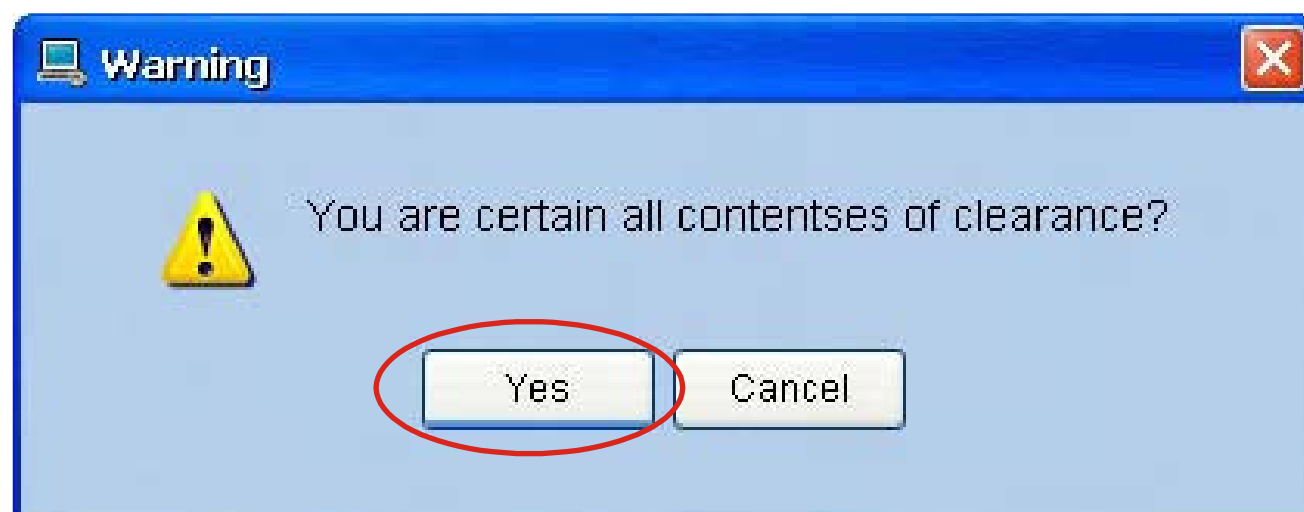
If when you communicate the picture or flash, it is error, unsuccessful, you may clear sign contents and try again:

1. Click "Options"

2. Click "Led State", then click "System clear"



3. Click "Yes" and delete, then you can communicate again.



Beginning Text Messaging

Get system information

NOTE: You can get to know some basic information about display and software, such as size, color, firmware version, firmware update time of display, set equipment number, connection information, and so on.

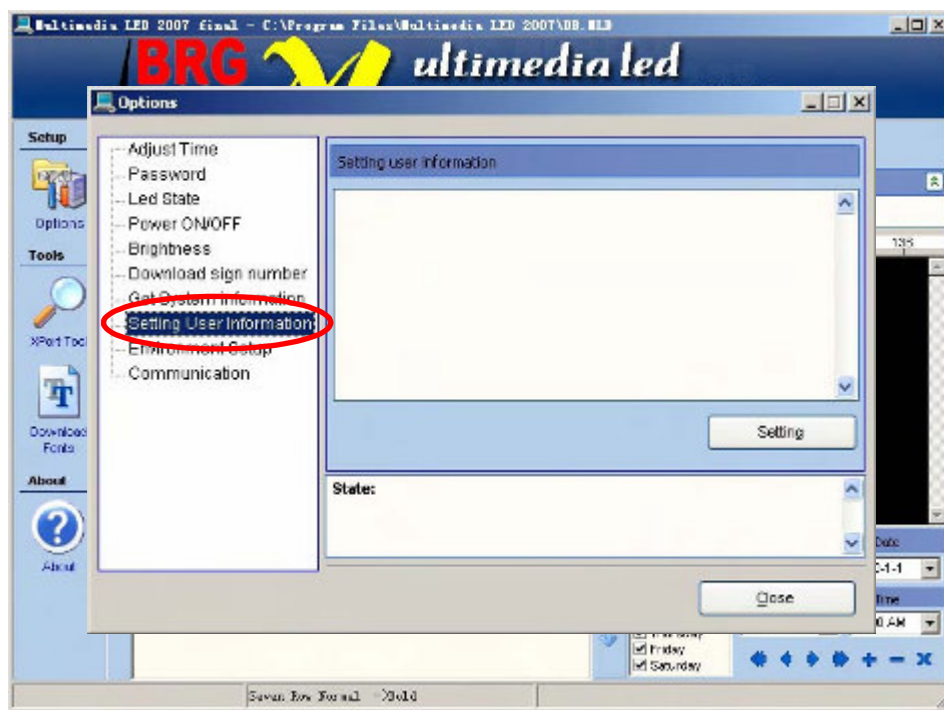
Step1 Click "About".



Step2 You can get information about connection between sign(s) and pc by following steps below: Click "Options".



Step3 Click on "Get System information".



When you click "Options", the serials menu as below:

Adjust Time: Adjust time on sign the same as time on PC;

Password: Set your personal password for your sign.

Led State: Set your led sign's state.

Power ON/OFF: Pre-define the power on/off time for your sign.

Brightness: Adjust brightness for your sign, it need hardware to work.

Download sign Number: Used for selecting group of signs when you choose RS485 communication.

Get System information: Get connection information between sign(s) and PC.

Setting User Information: Set the memo message when the sign is powered on.

Environment Setup: Set whether or not start a new line on sign by pressing Enter on keyboard.

Communication: Select communication way: RS232, RS485, TCP/IP.

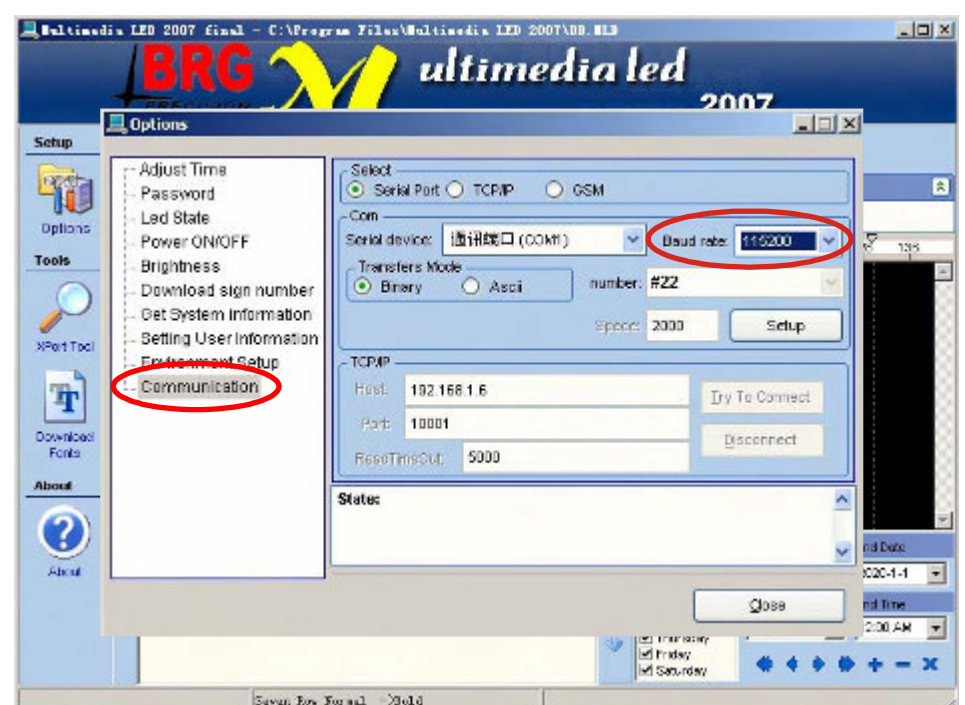
Select communication mode

Note: Before you edit and send the information to display, you must choose the right communication way and make sure the sign is connected with PC. **Baud:9600 1 & 2 Line signs. Baud:115200 3 & 4 line Firmware 3.8H ONLY.**

Step1 Click "Options".

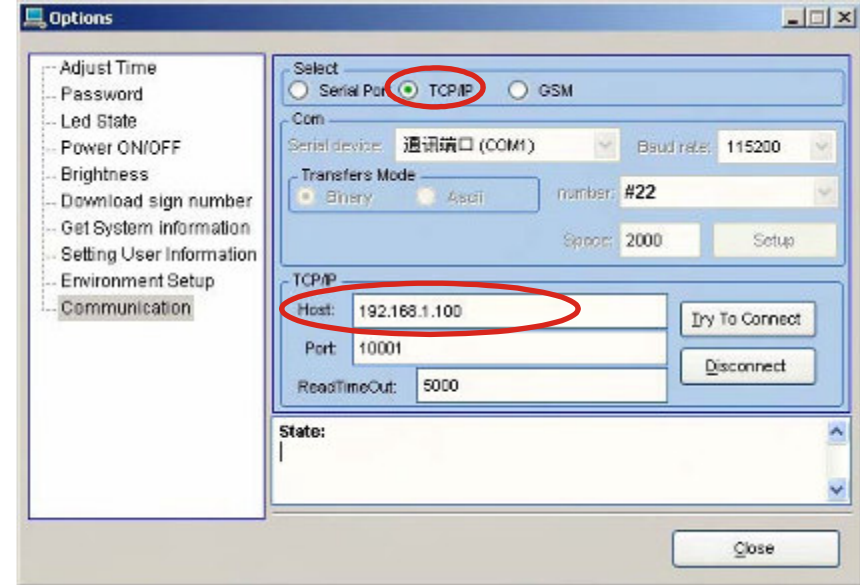
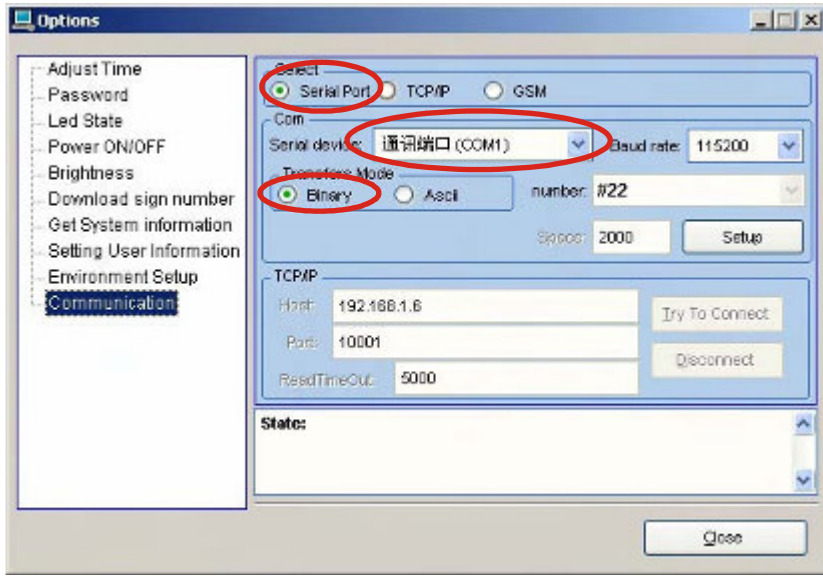


Step2 Click "Communication". Set "Baud rate" to 115200 or 9600.

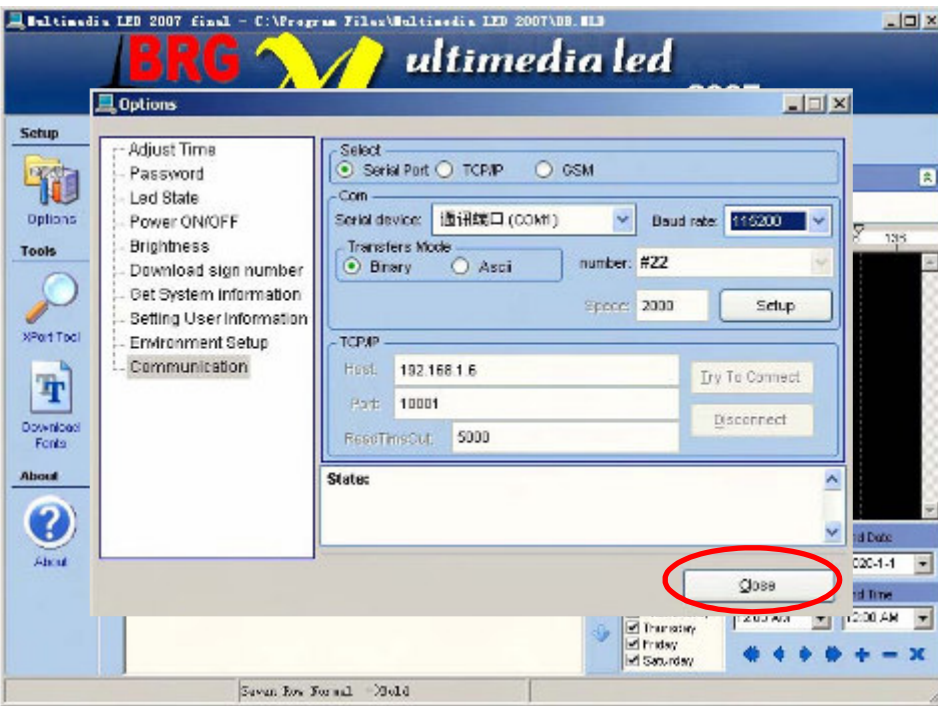


Note:
If you use RS232 or RS485 communication, you should select “Serial port--Binary”.

If you use TCP/IP communication for only one sign, you should select “TCP/IP”.



Step3 Click “Close”.



Create text

Note: Your BRG sign should have arrived configured for your expected use. If not, before you create text, you should click “Download Fonts”, especially after you update the firmware or save new fonts in the software.

Step1 For example, type “Welcome” in messaging window.



Copy and paste: You can copy content from WORD or EXCEL document, and paste in the messaging window.

Set font and color: Highlight text first, then set font size under **Font:** and character color under **Color:**

Set mode, speed and stop time: Set before download messages onto PC.

Align: You can align text Left/Right/Center by clicking [Left/Right/Center icons]

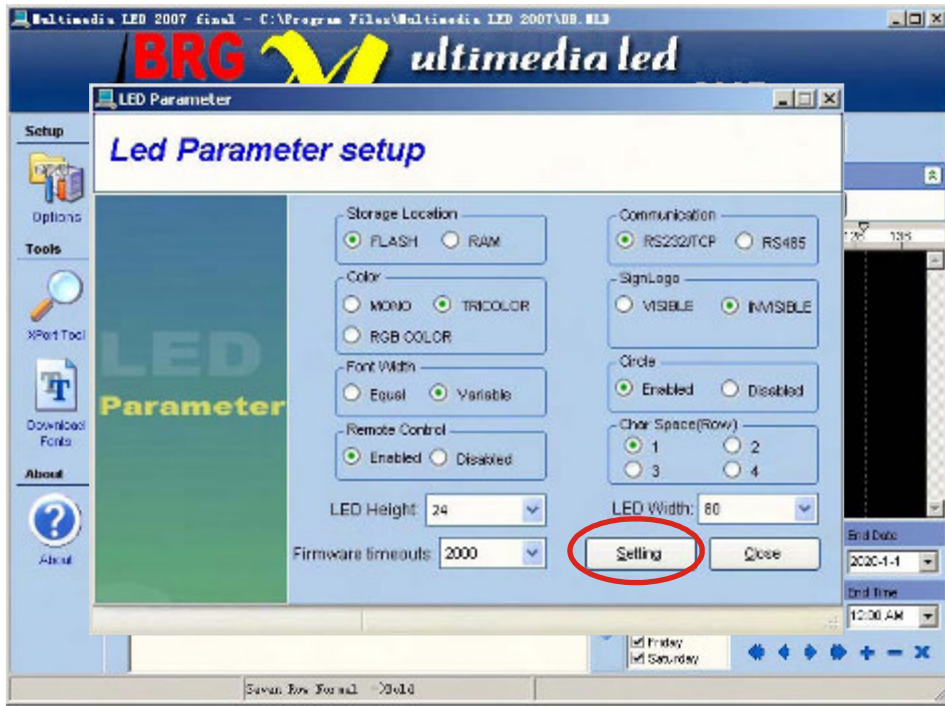
Add new line: Press Enter on keyboard .

Note: Before you fulfill this function, you should make selection under “Environment Setup” in “Options” menu.

If you choose Insert New Line with Enter , which means that, you press “Enter” on keyboard, consequently, a new line on the sign. If you choose Do Not Insert New Line with Enter , which means that, even if you click [Enter icon] on software, there is a new line on the sign.

Step 2

Skip this step if you are using a Preconfigured BRG Sign; After you finish the message edit and before you send message to the sign: Press Ctrl+F3 on keyboard, you will see as below:



Storage location: Select RAM, RAM only store the last message. But all the messages are lost when power off. Select FLASH, save all messages.

Color: In case of your sign is tri-color, if you choose TRICOLOR, text would be displayed in tri-color, if you choose MONO, text would be displayed in single color. In case of your sign is of single color, whatever you choose, text would be displayed in single color.

Font width: If you choose EQUAL, all characters have same width (width is depending on the max. Width). If choose VARIABLE, characters differ in width.

Remote control: You can choose program sign by remote control or not.

LED Width: Set width of display area of sign.

Communication: Select RS232/TCP or RS485 when you use serial port; It also need do change on the controller and communication cable between RS232/TCP or RS485.

Sign logo: Select whether you need start message when power on the sign.

Circle: Select whether you need the messages to Repeat.

Char space: Set the space between characters, the default space is one dot.

Step 3

Click "Download Text".



Download text: If the message is only text, then click it, the inside symbols, countdown, time, temperature, etc, are all belong to text;

Download All: Download text and bmp picture from you PC to your sign. For picture, you only need download one time by clicking Download All, for second time, you only need click Download text, because the picture had been already stored on the software and is viewed as text by system.

Insert Extra Text

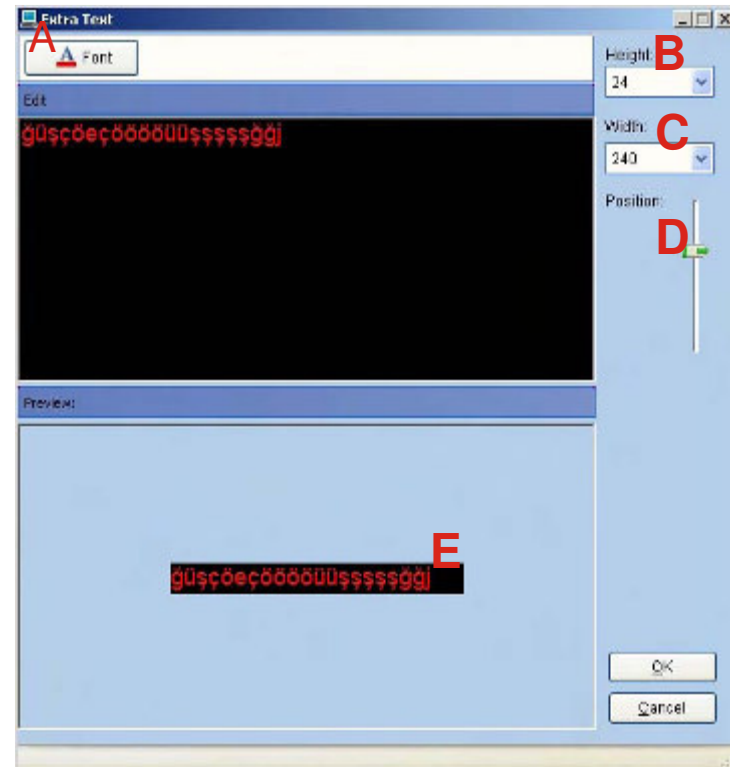
If you want to send other language ,not English to led sign, you can use “Insert Extra Text”.



Click



Edit the text you want to send to sign



A-Font: Click "Font", you can set the font, size, color

B-Height: Set the sign's height

C-Width: Set the sign's width

D-Position: Adjust the text's position on the sign.

E-Preview: you can preview the text's effect



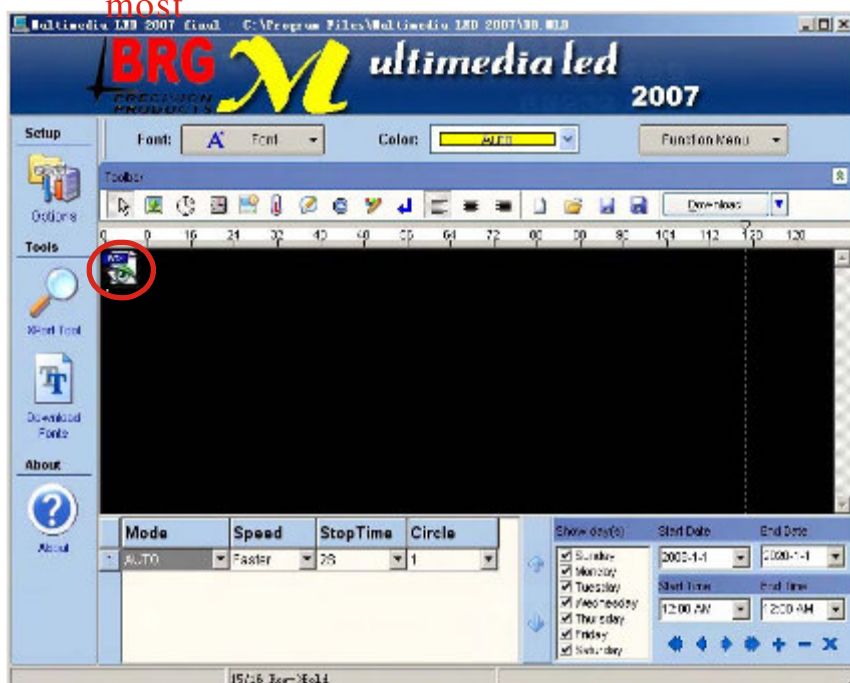
After editing, click “OK”, the text will display as a “RTX” file.

Note: you can insert thirty-six files at most



If you want to modify the text ,double click

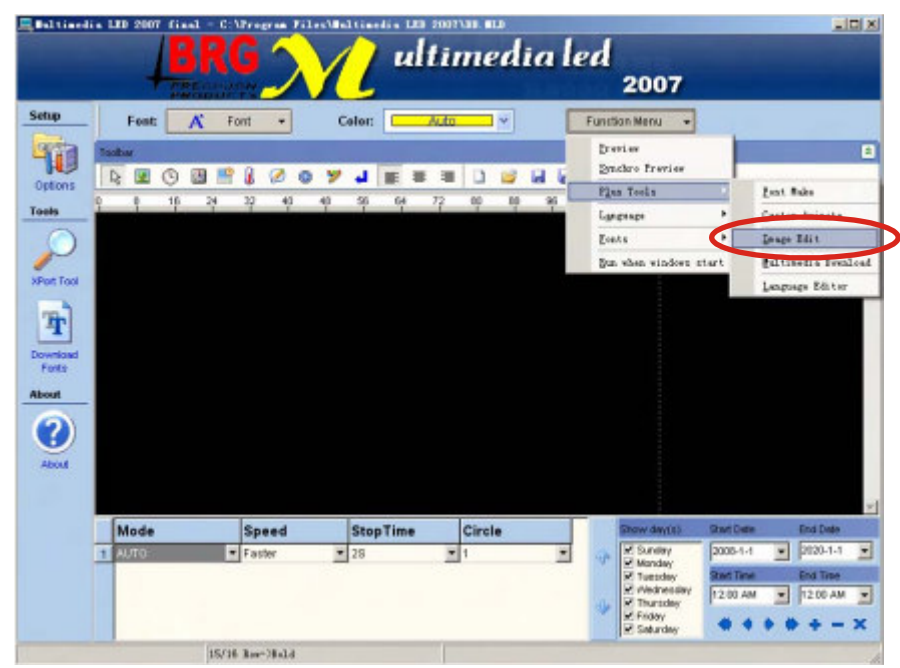
return to the step 2, edit the text.



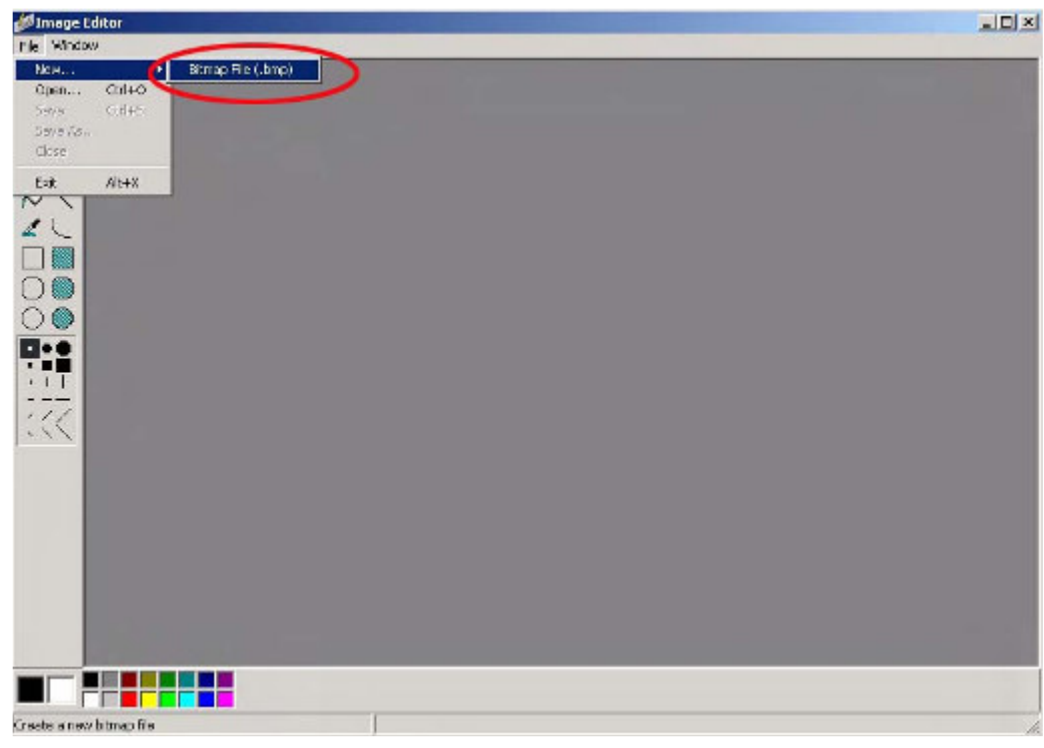
Advanced Text Messaging

Insert Bitmap file

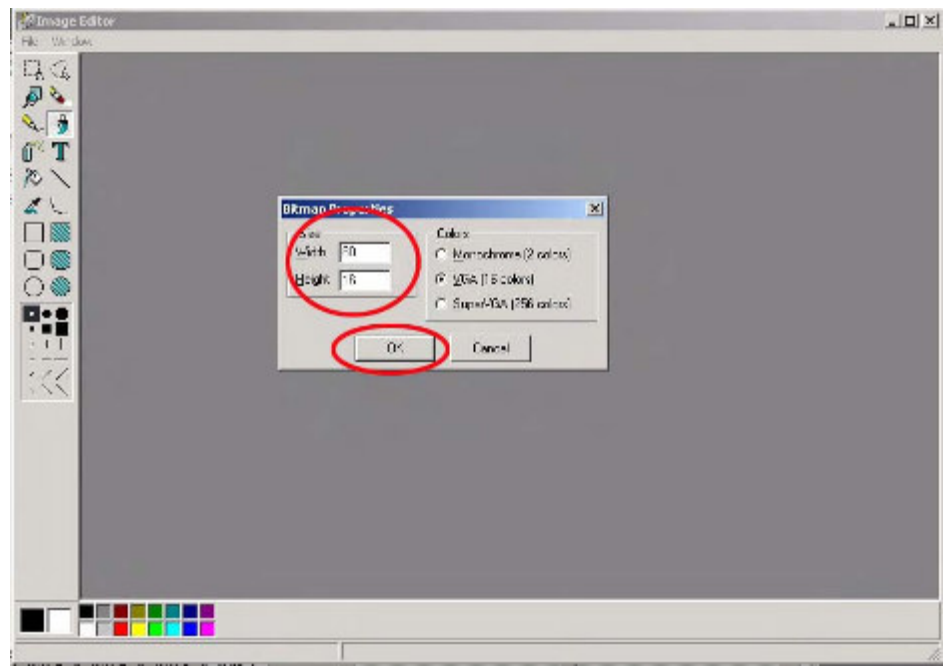
Step1 Click on "Image Edit".



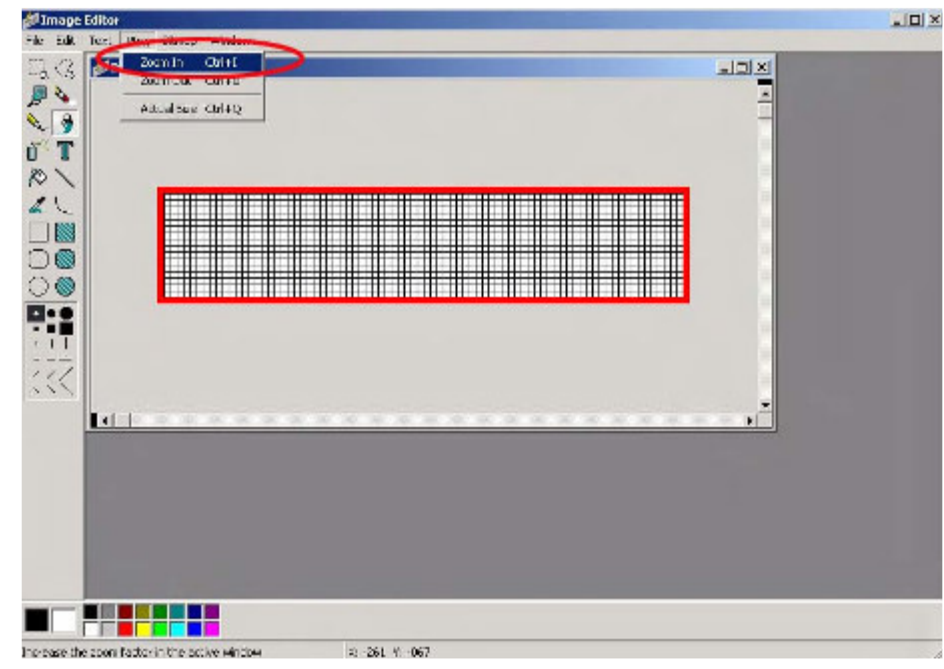
Step2 Click "Bitmap File".



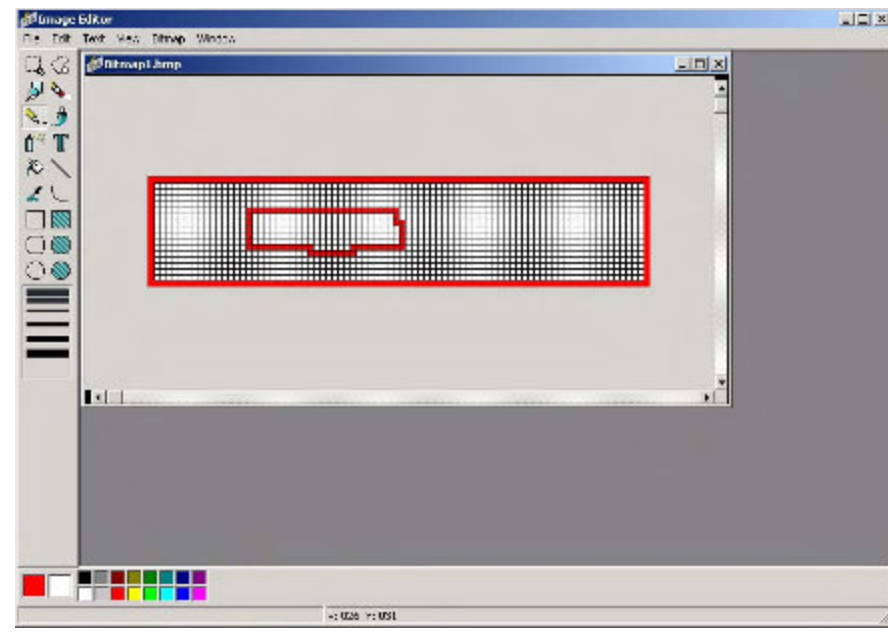
Step3 Set size and color for picture according to real size of your sign. Click "OK".



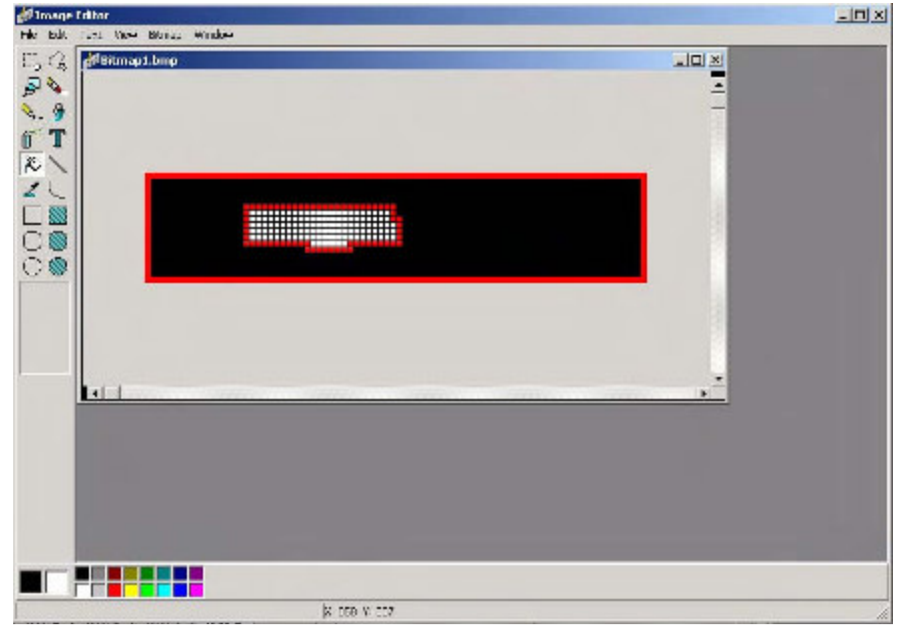
Step4 Click "zoom in" continuously to enlarge the edit area



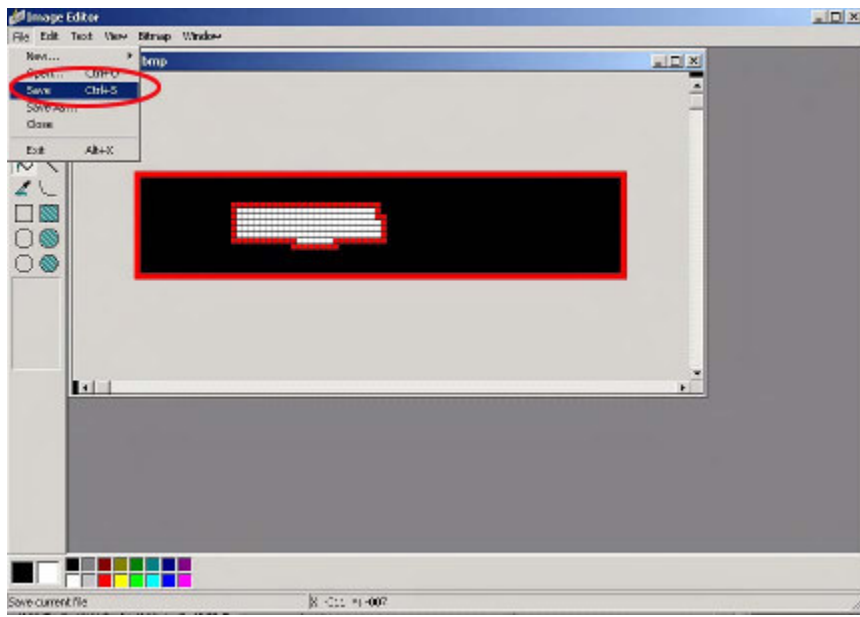
Step5 Draw picture in the edit area.



Step6 Fill the background with black color.



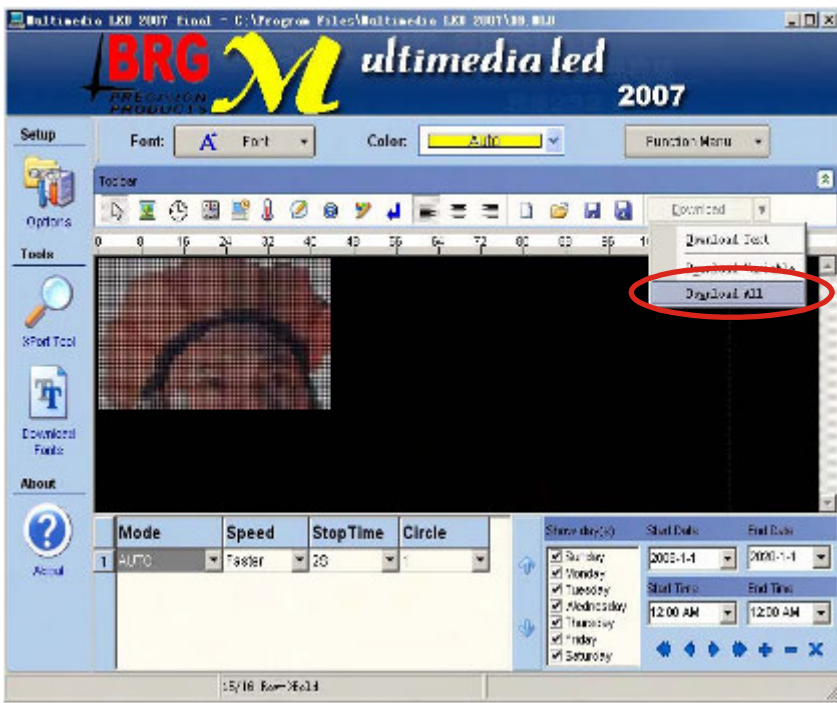
Step7 Click "Save" to save the picture onto PC as *.BMP file.



Step8 Click  to open *.BMP file.



Step9 Click "Download All".



Insert real-time clock

Step1 Click .



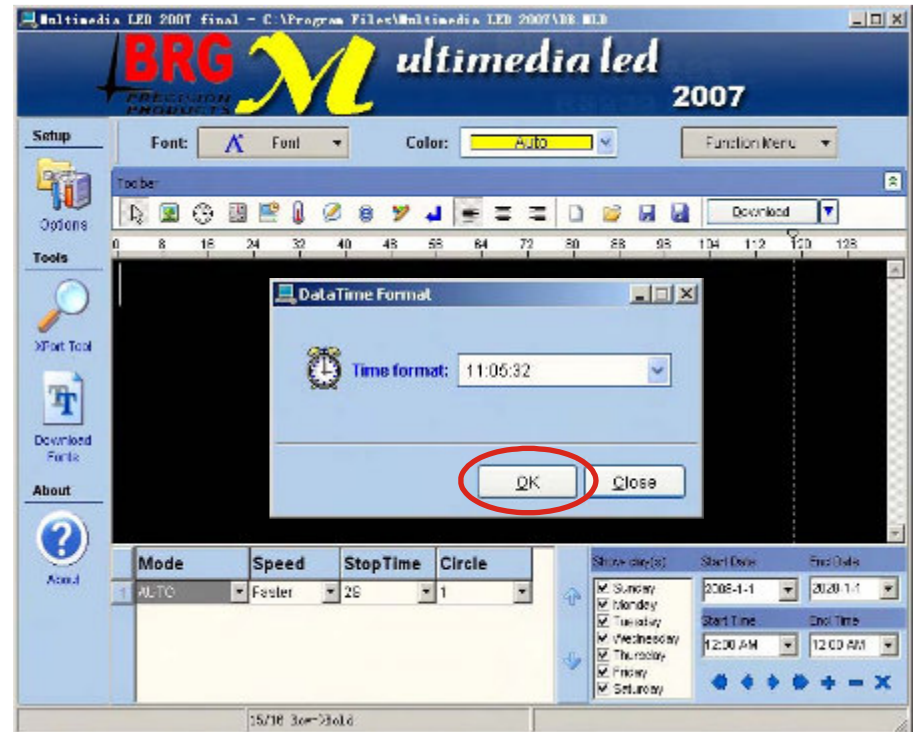
Step2 Click "Download Time", then click "OK".



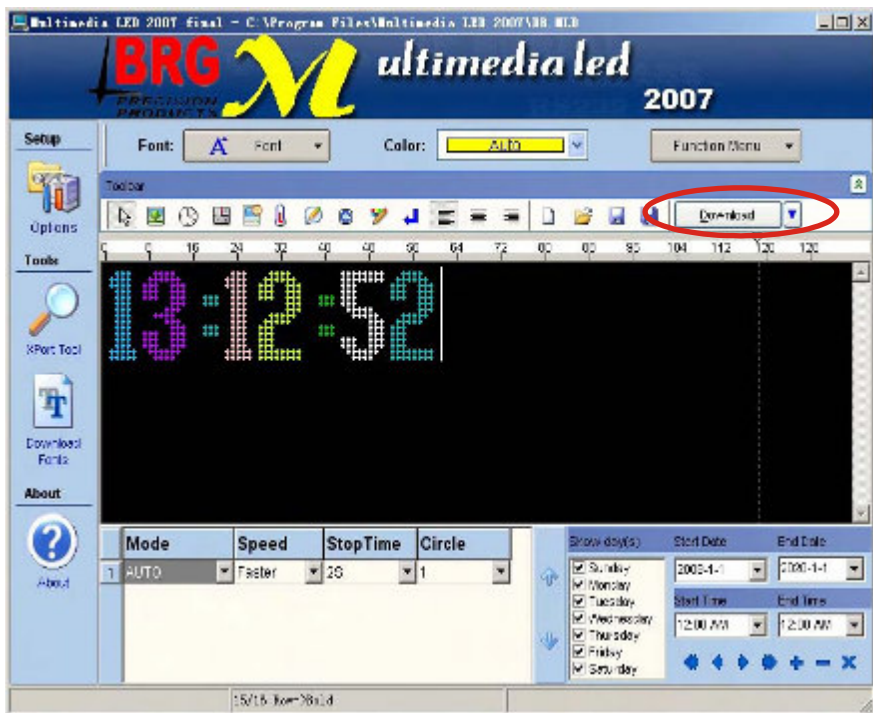
Step3 Click .



Step4 Select time format, then click “OK”.



Step5 Click “Download”.

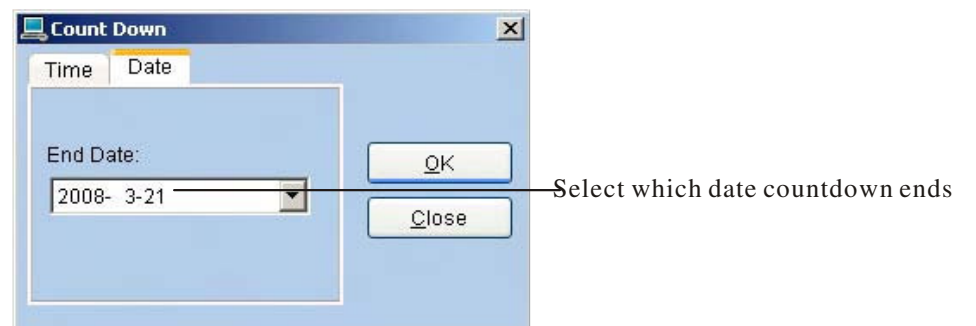
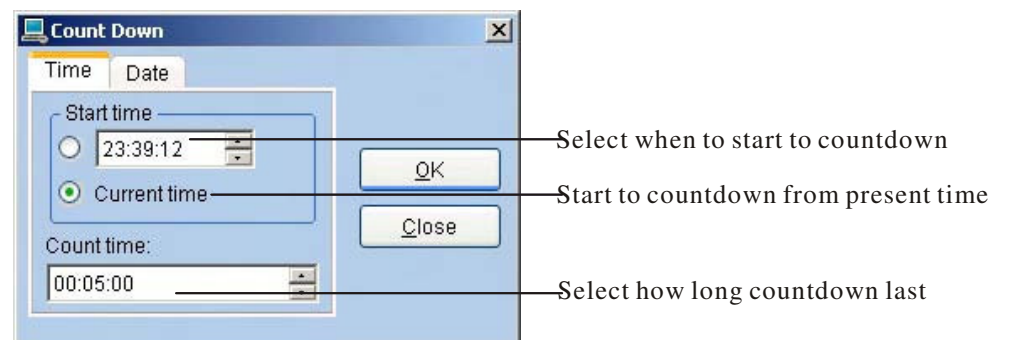


Insert countdown

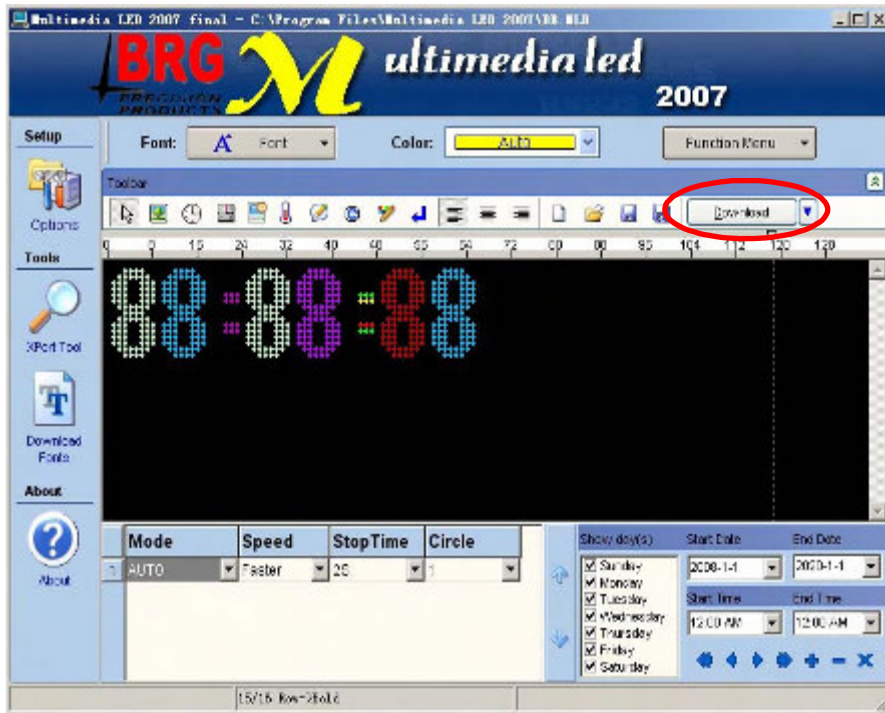
Step1 Click .



Step2 Select countdown time or date format , then click “OK”.



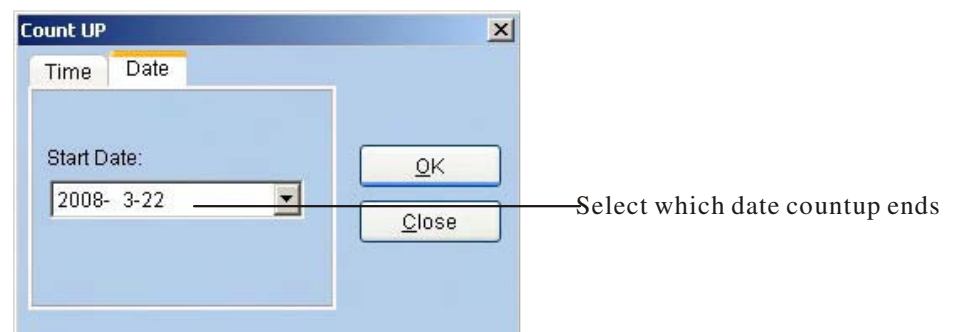
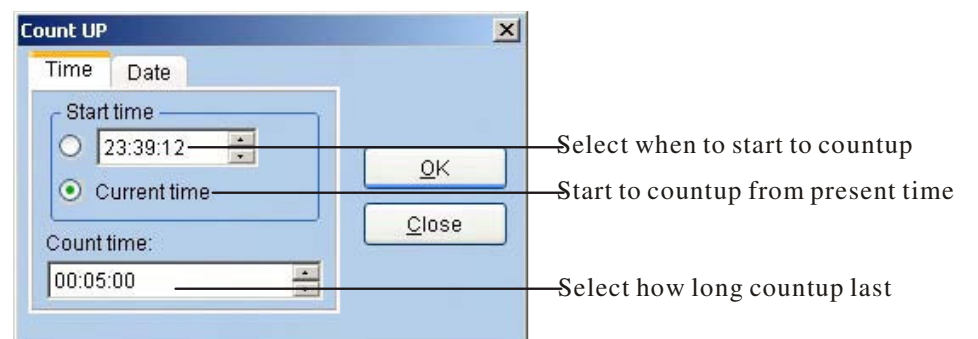
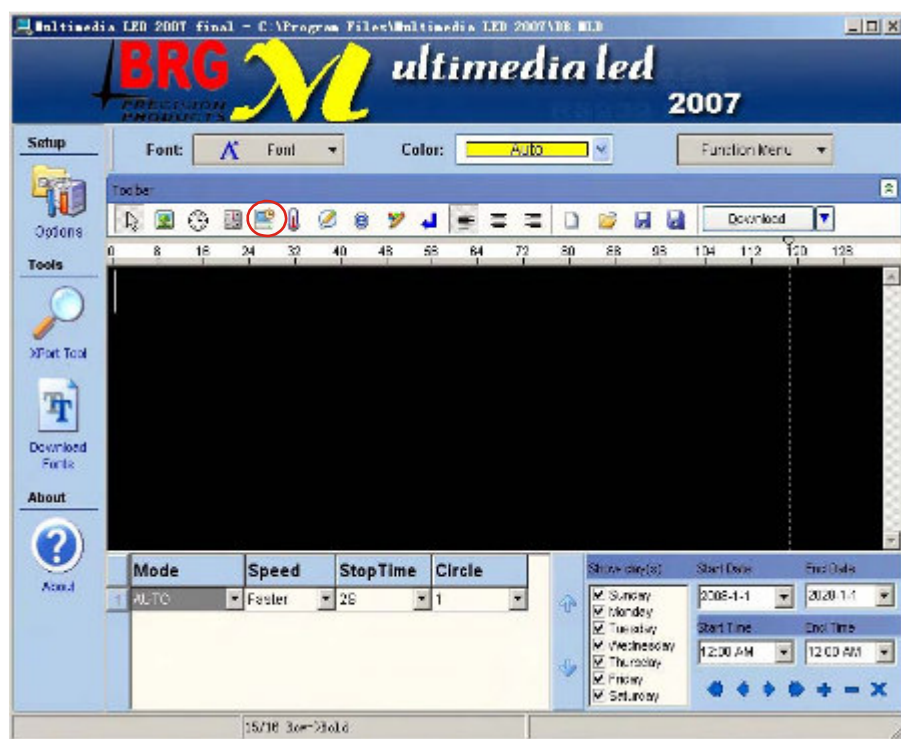
Step3 Click "Download".



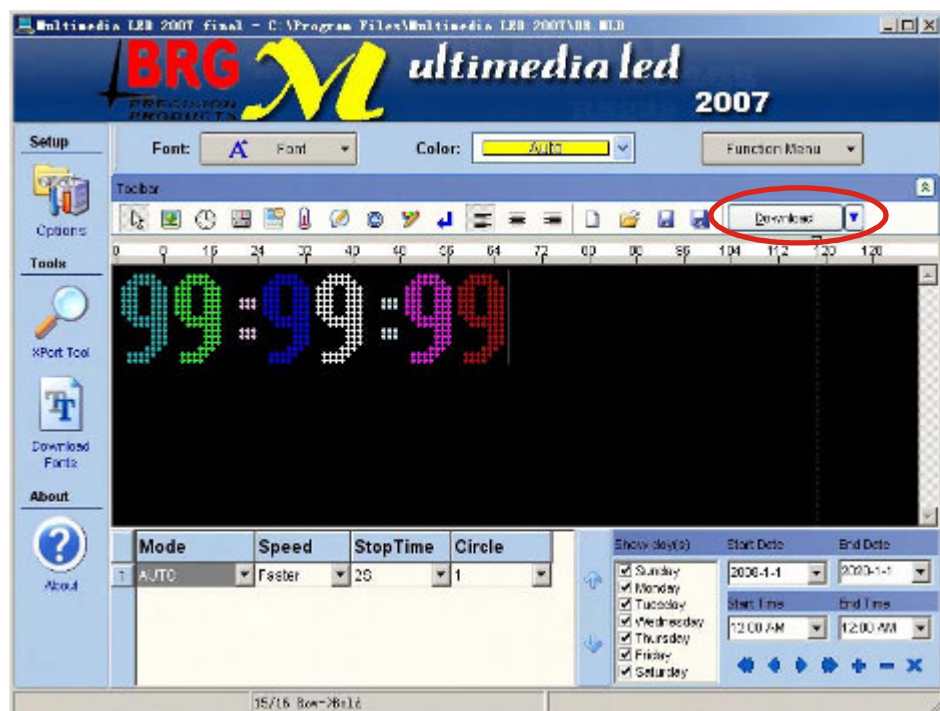
Insert count-up

Step1 Click  .

Step2 Select count-up time or date format , then click "OK".



Step3 Click "Download".

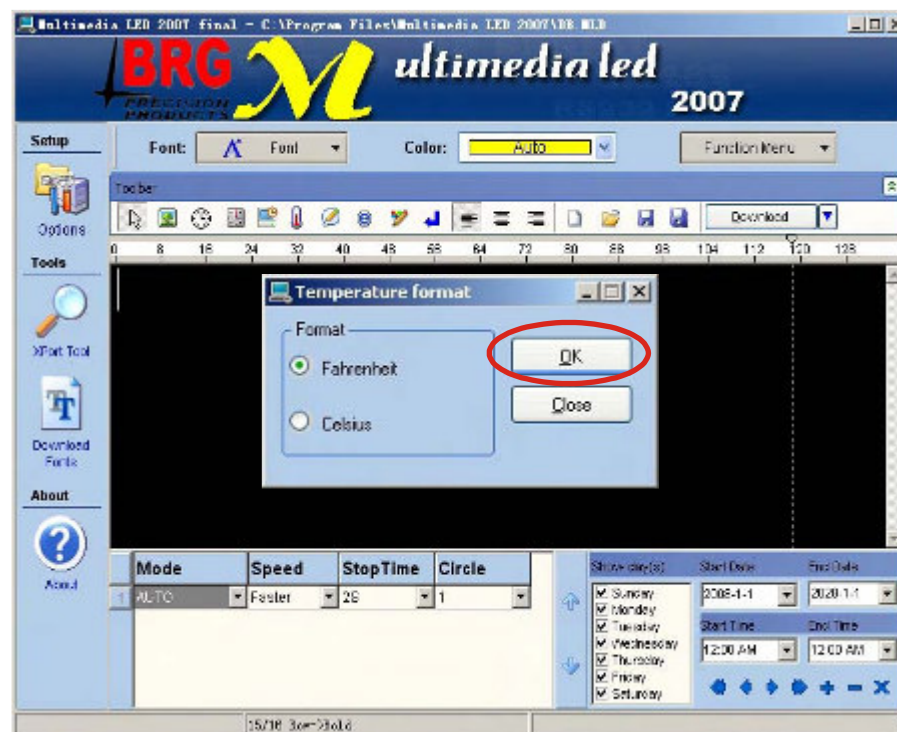
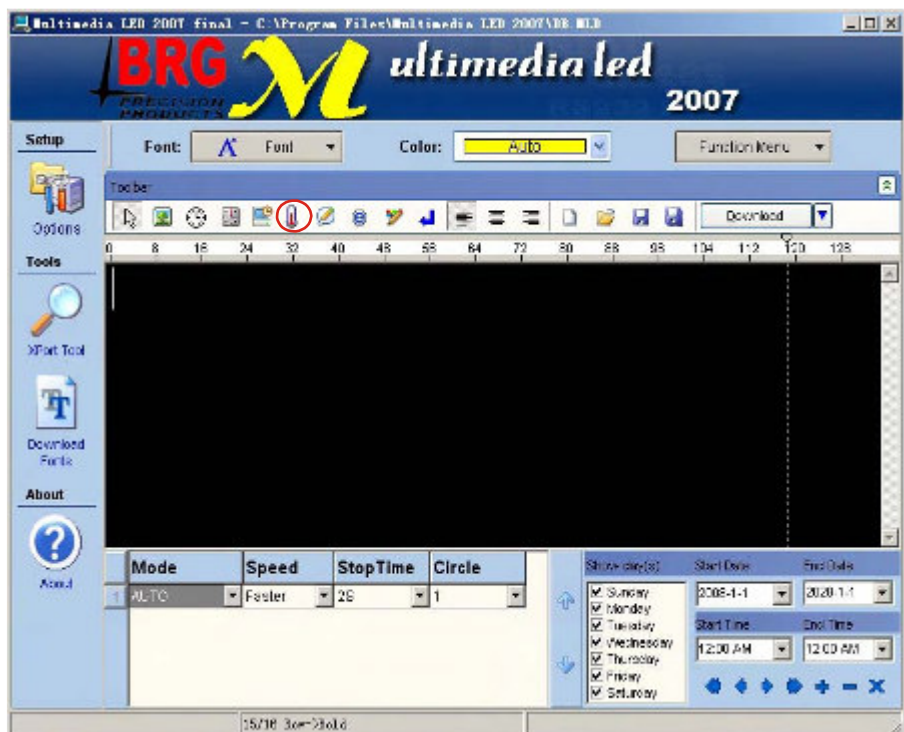


Insert temperature

Note: This function needs additional hardware to work and is not supported by BRG.

Step1 Click  .

Step2 Select temperature format , then click “OK”.

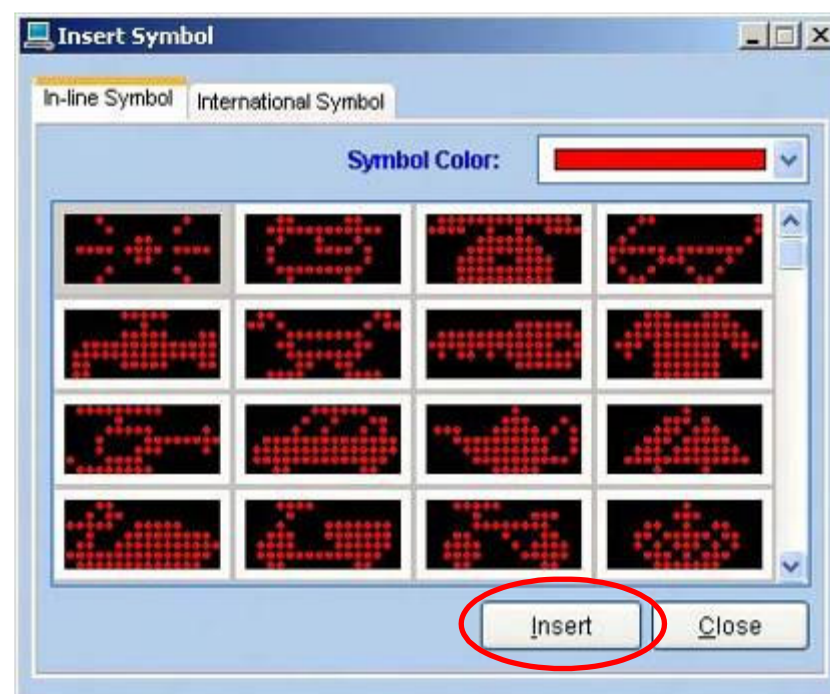
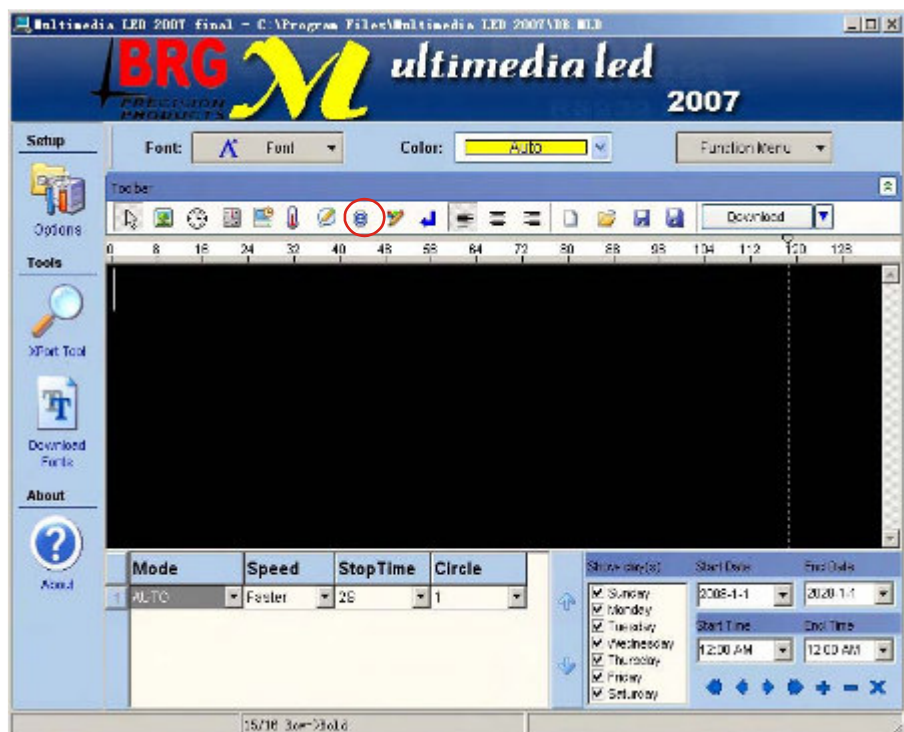


Step3 Click “Download”.

Insert symbol

Step1 Click  .

Step2 Select one symbol, then click “Insert”. Close the “Insert Symbol” window.



Step3 Click “Download”.

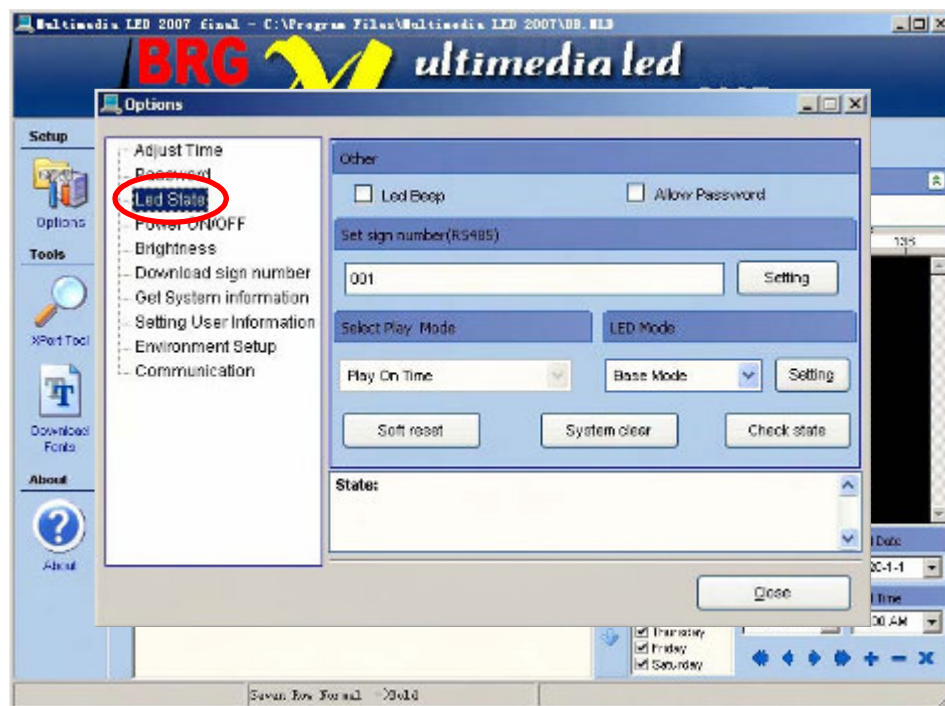
Pre-define message show day(s) and time

Note: In this operation, you must select expand mode under “Led state”.

Step1 Click “Options”.

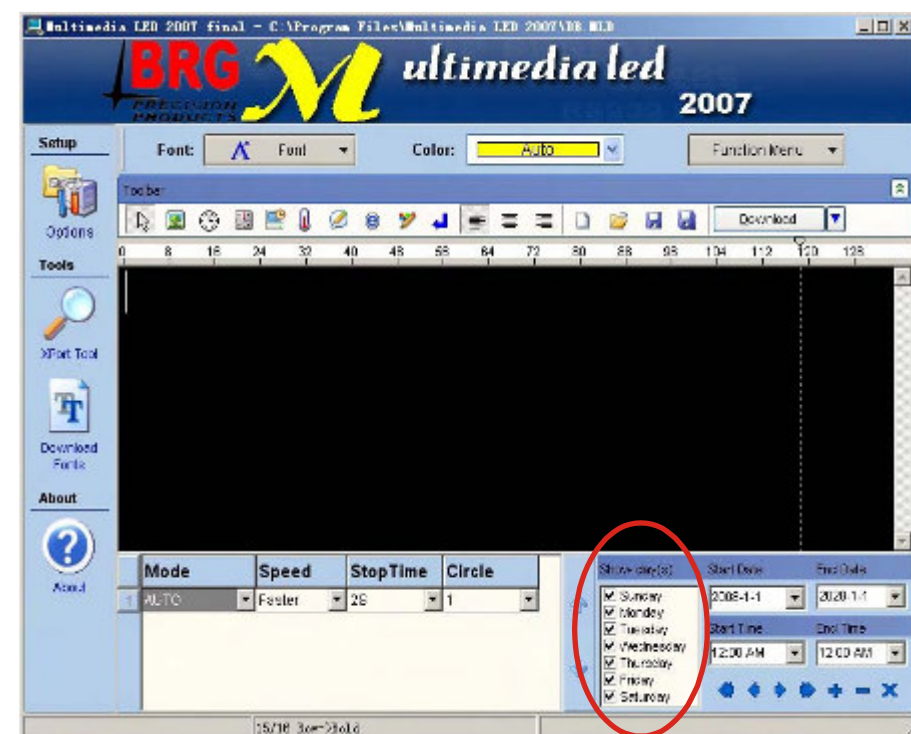
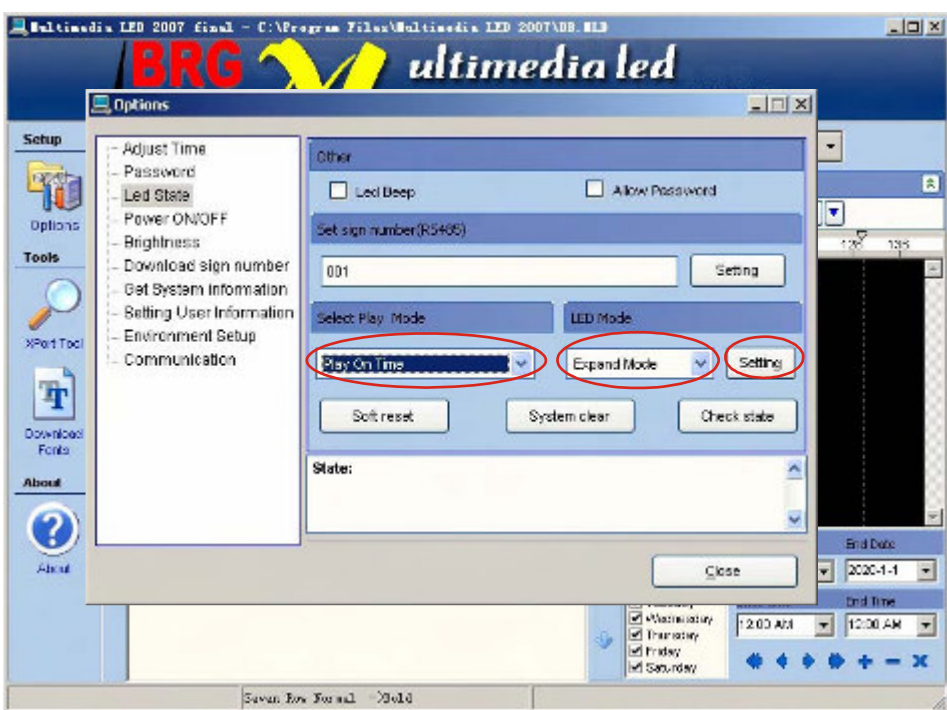


Step2 Click “Led State”.



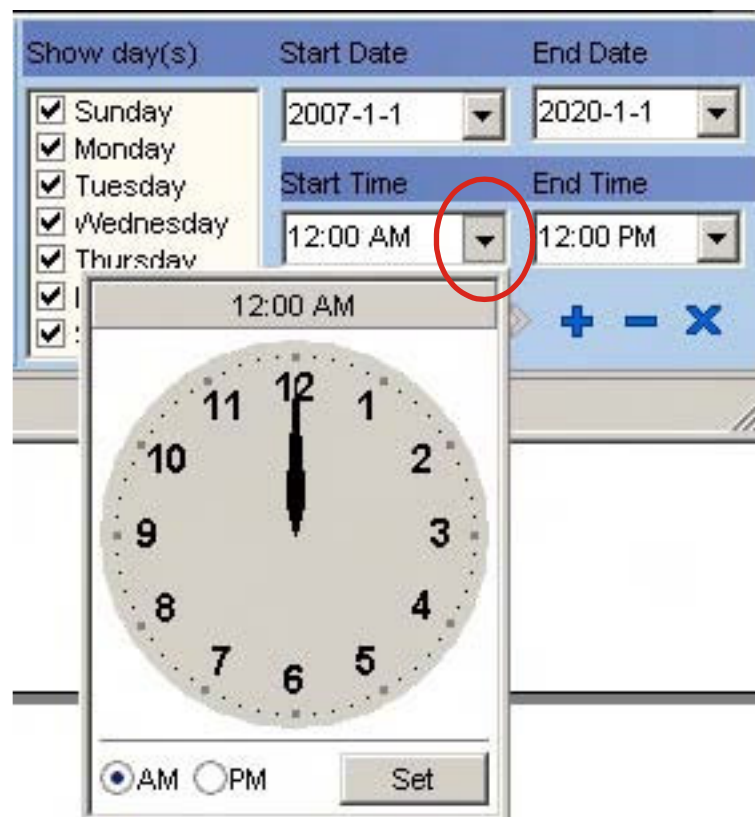
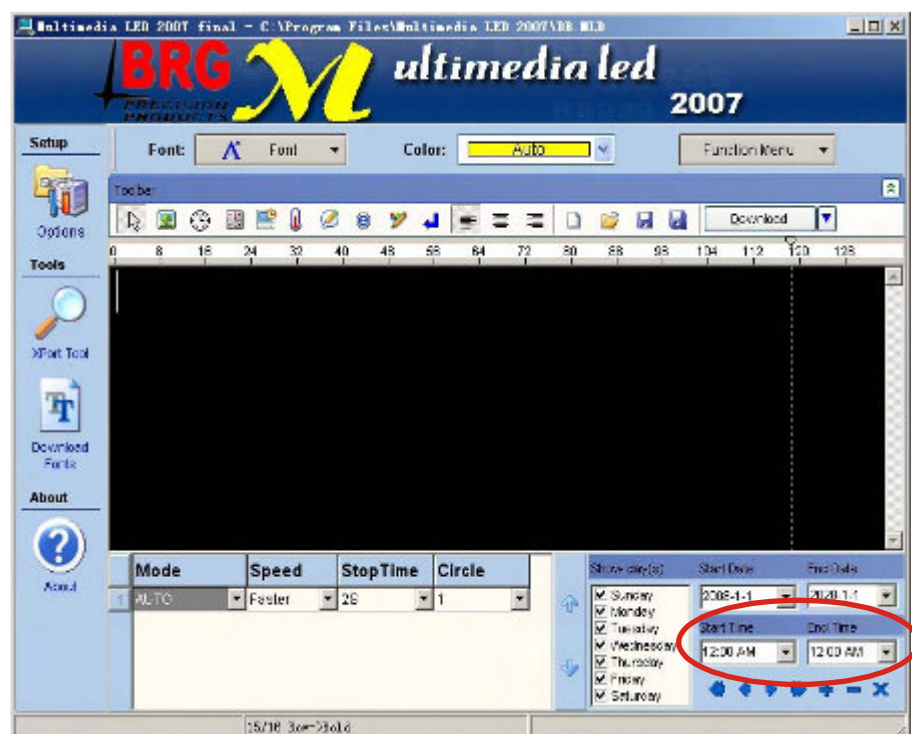
Step3 Select “Expand Mode”, under “LED Mode”, Select “Play On Time” under “Select Play Mode”, then click “Setting”. Close “Options” window.

Step4 Select message show days.



Step5 Click down arrow under “Start Time”.

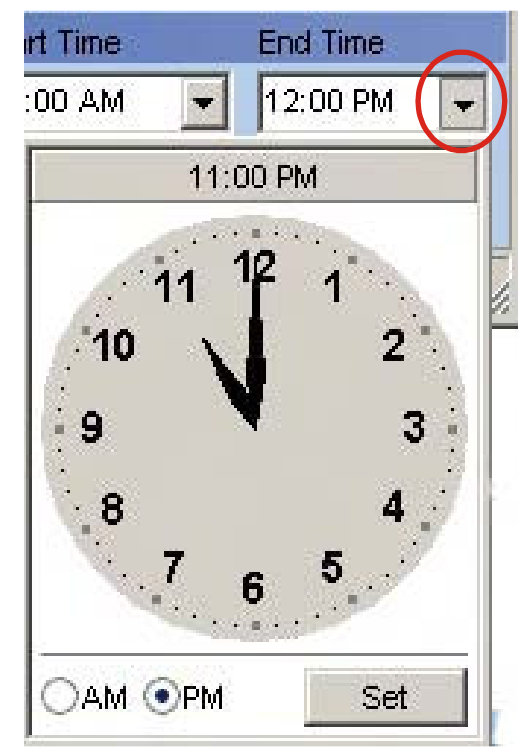
Step6 Select Start Time, then click “Set”.



Step7 Click down arrow under “End Time”.



Step8 Select End Time, then click “Set”.



Step9 Click “Download”.

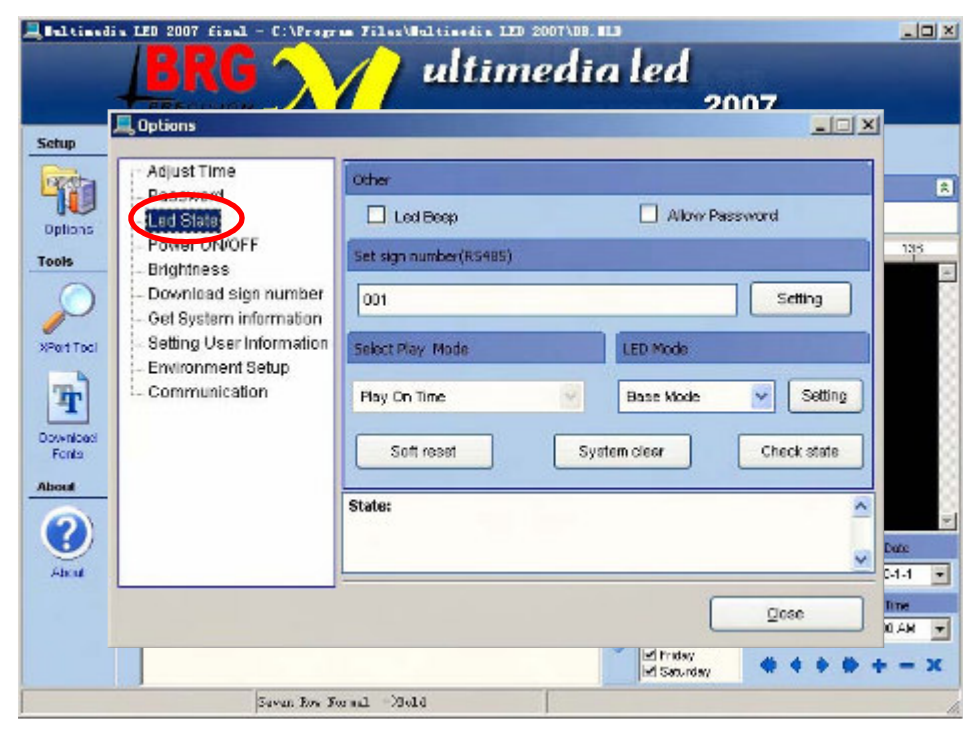
Pre-define power on/off

Note: In this operation, you must select expand mode under “Led state”.

Step1 Click “Options”.

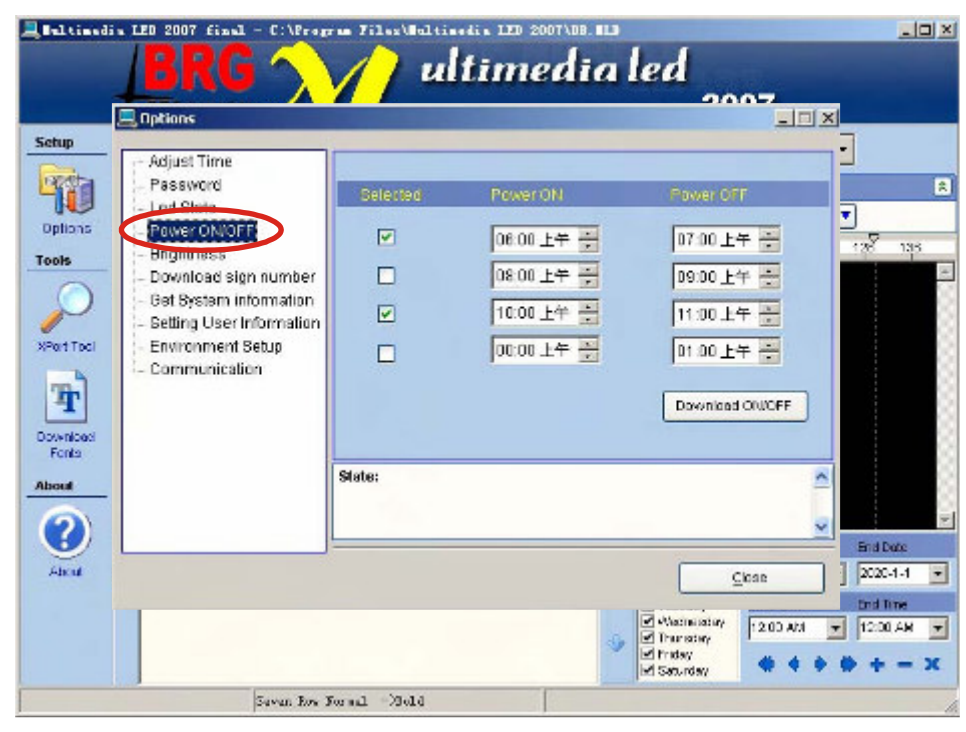
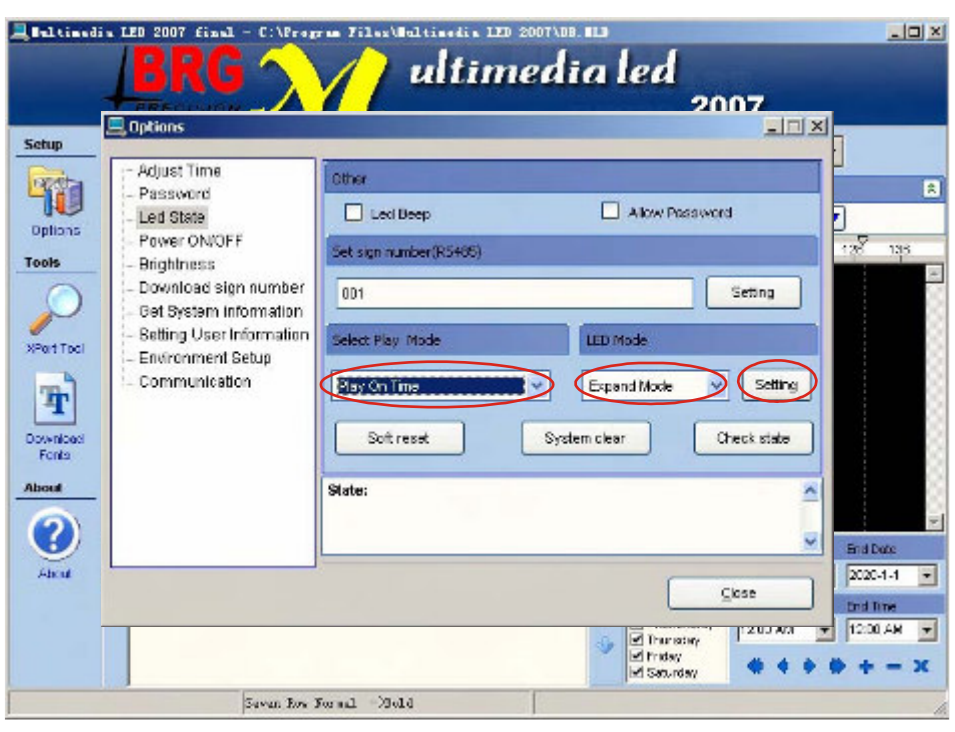


Step2 Click “Led State”.



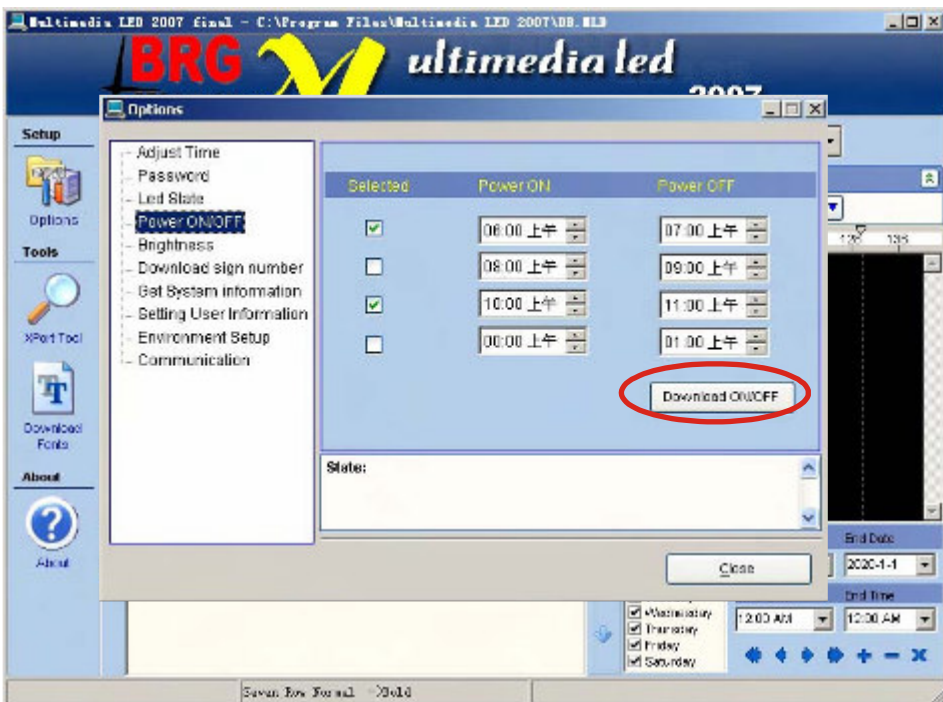
Step3 Select “Expand Mode”, under “LED Mode”, Select “Play On Time” under “Select Play Mode”, then click “Setting”.

Step4 Click “Power ON/OFF”.



Step5 Select power on/off time, then click “Download ON/OFF”, finally click “OK”.

Step6 Click “Download”.



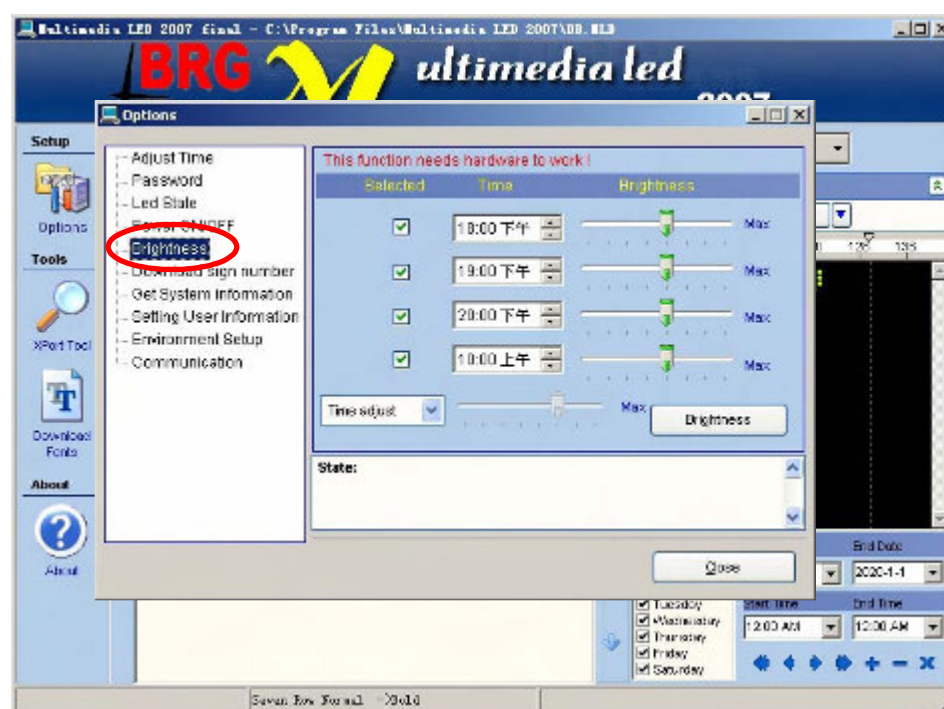
Adjust brightness

Note: In this operation, you must select expand mode under “Led state”.

Note: Needs hardware to work, BRG does not support this option.

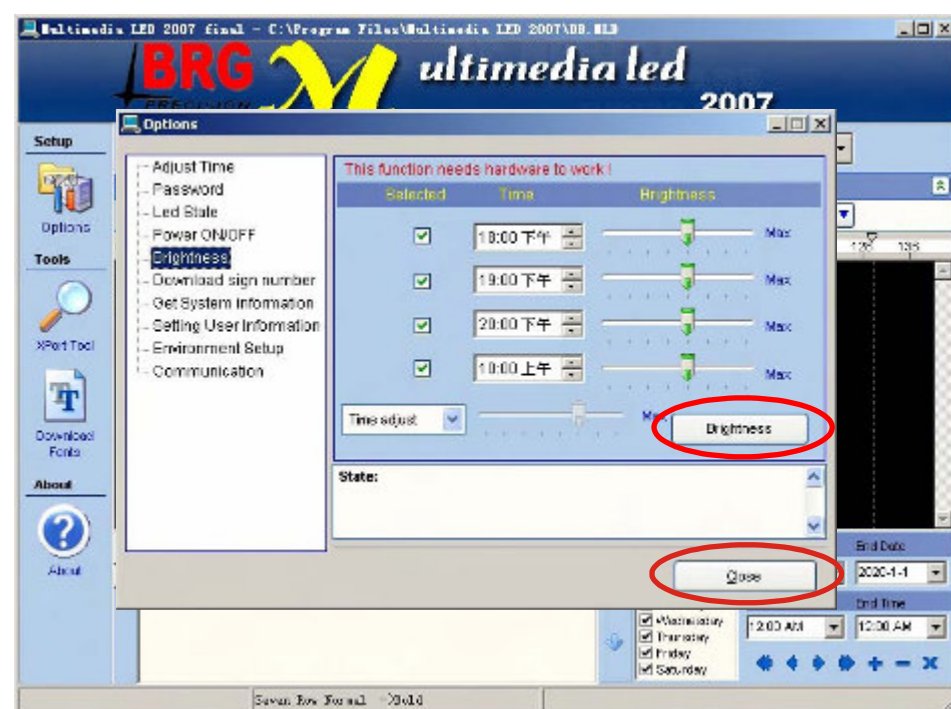
Step1 Click “Options”.

Step2 Click “Brightness”.



Step3 After adjust brightness, then click “Brightness” finally click “OK”.

Step4 Click “Download”.

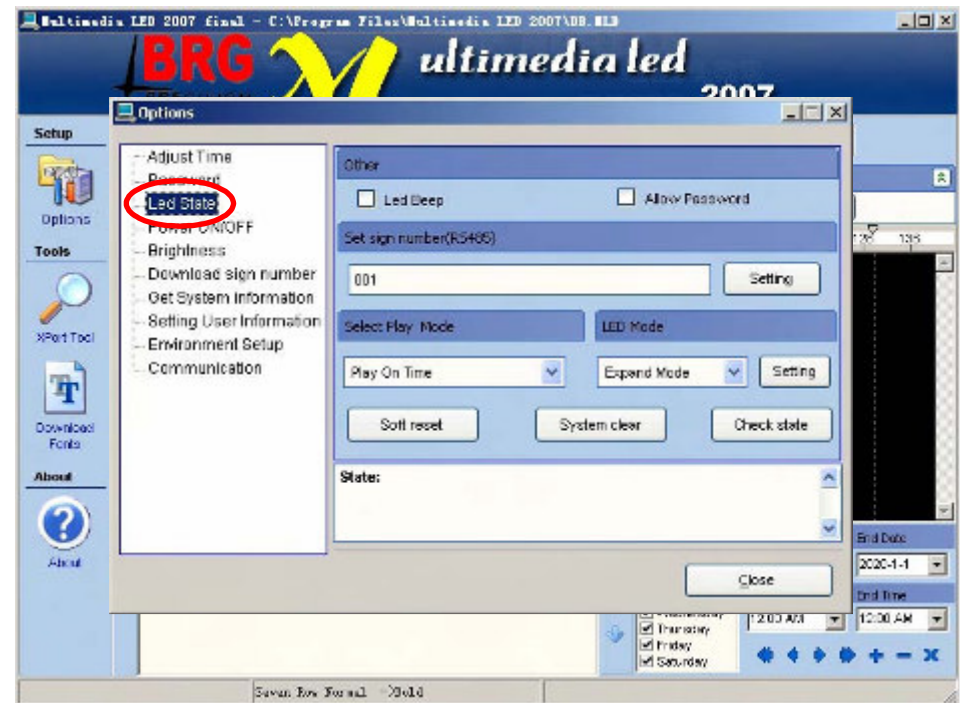


Set password

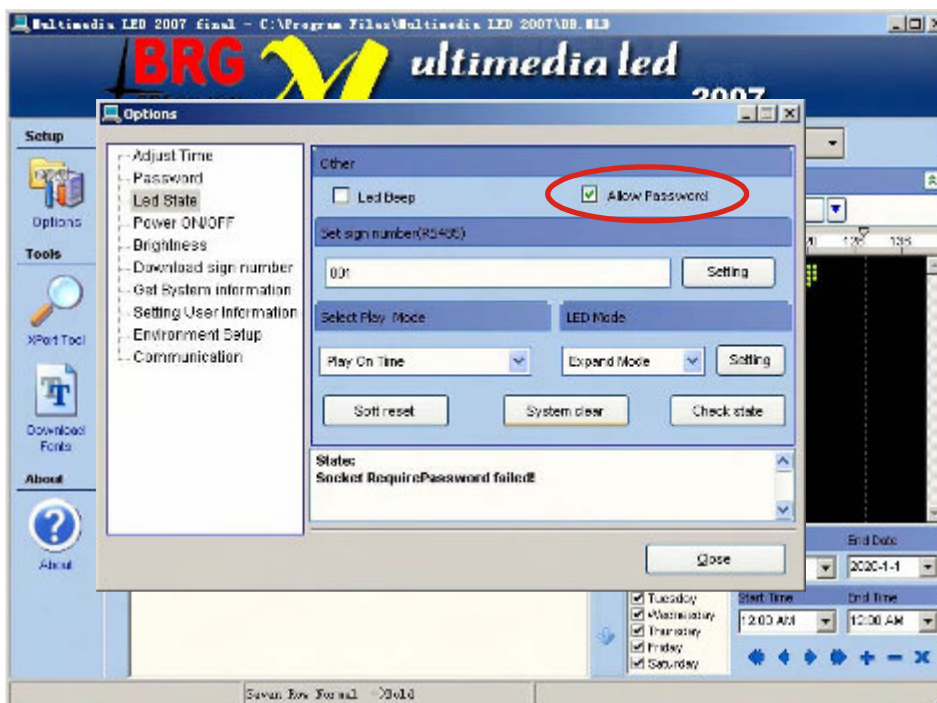
Step1 Click "Options".



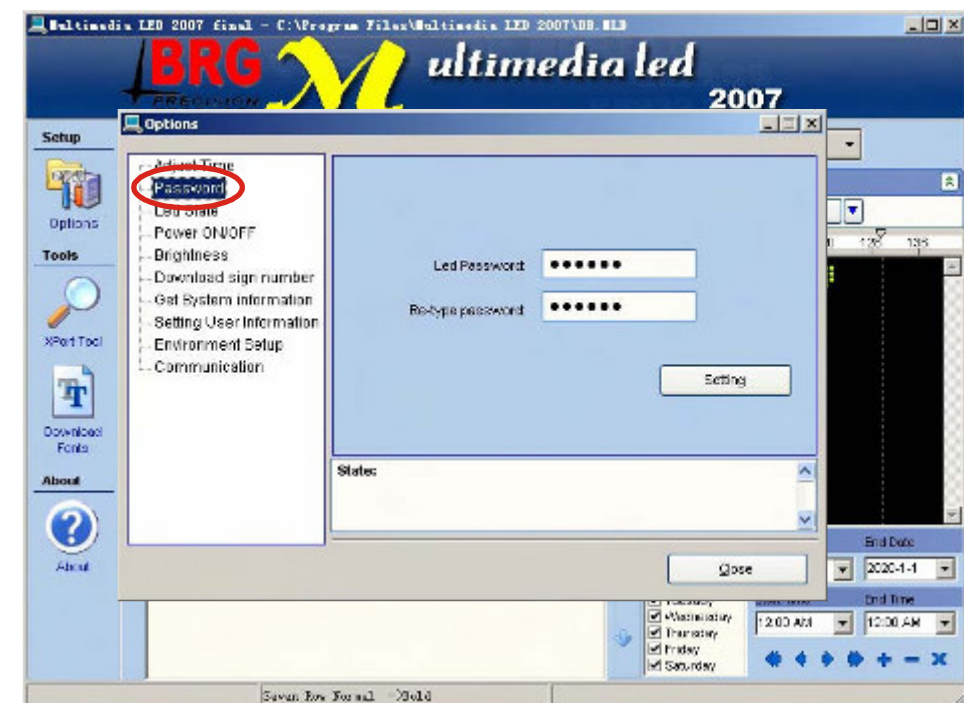
Step2 Click "Led State".



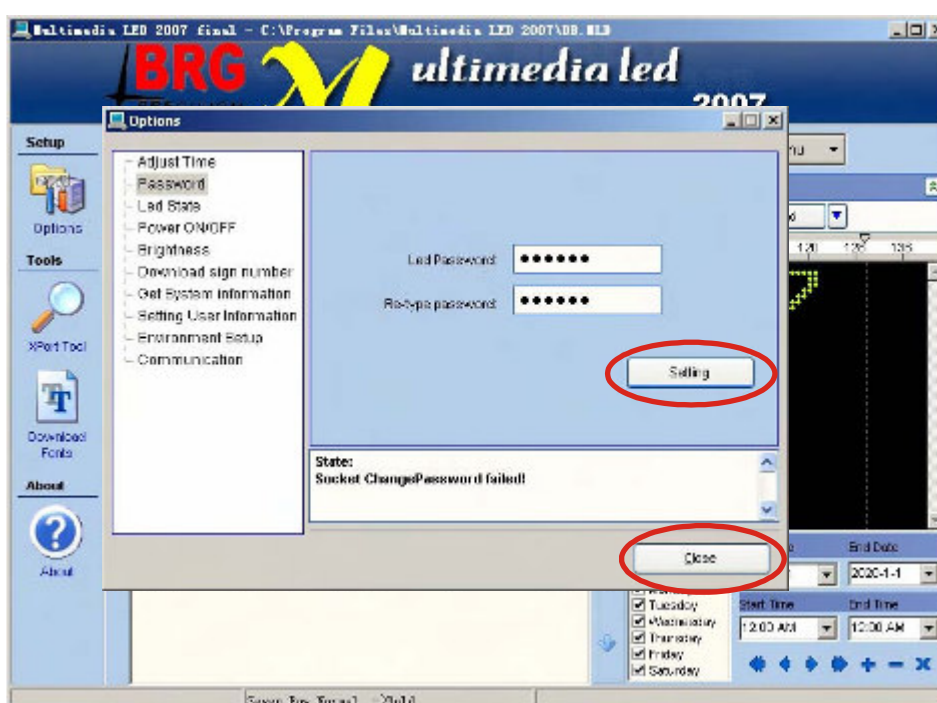
Step3 Select "Allow Password".



Step4 Click "Password".

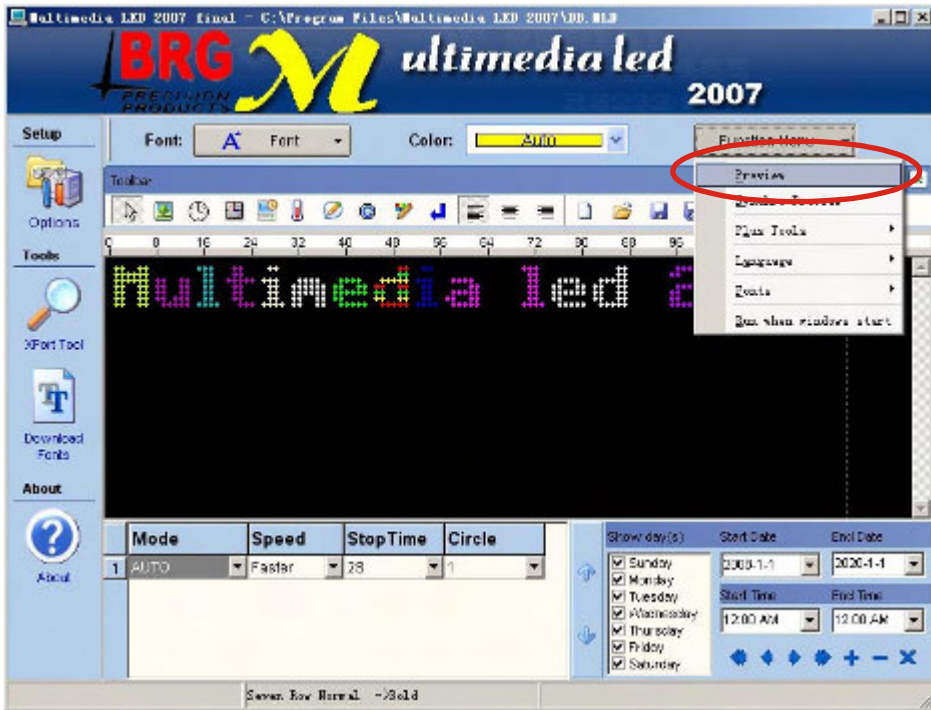


Step5 Type password, then click "Setting", and finally click "OK". Click "Download".

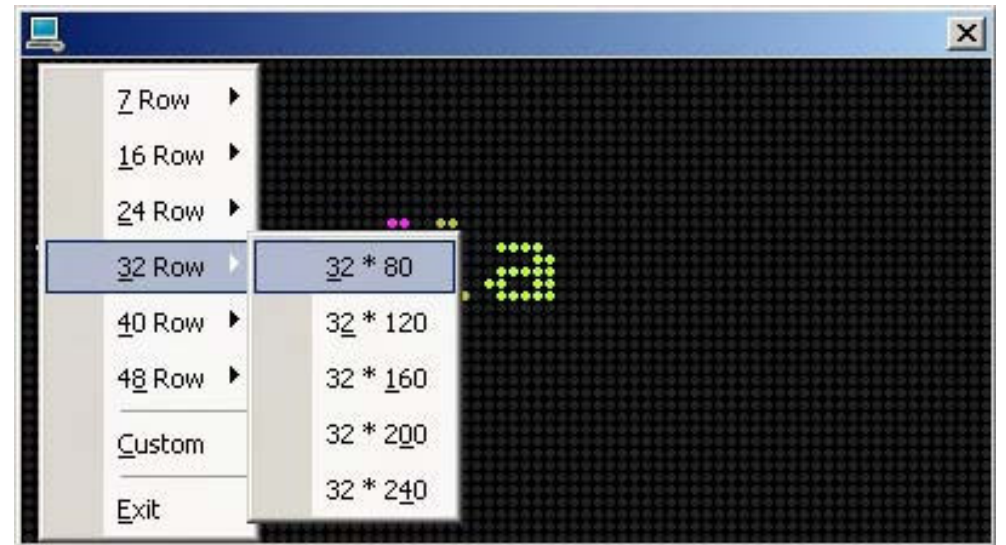


Preview

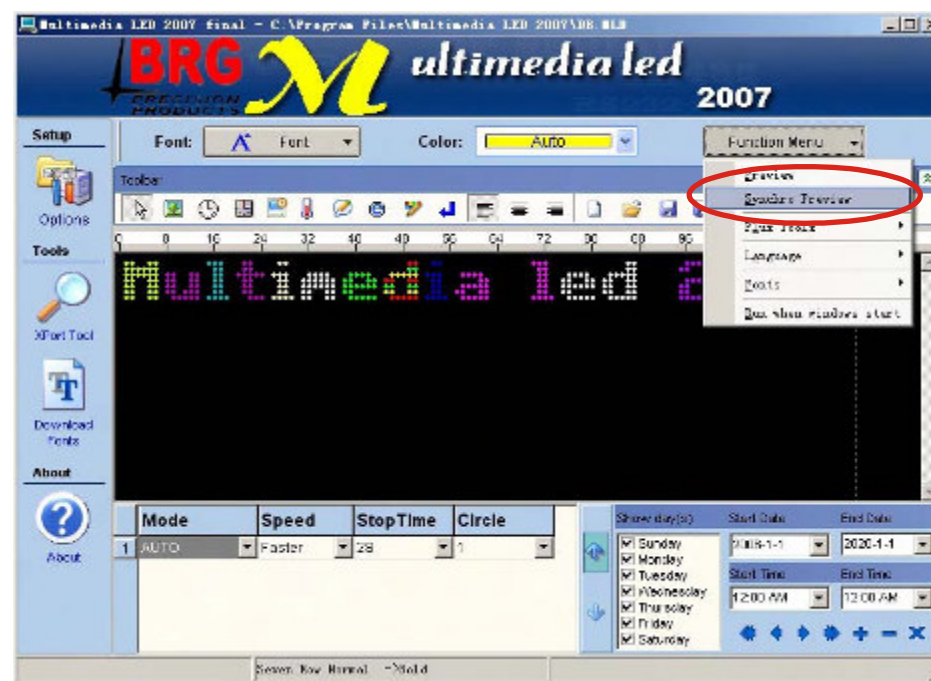
Step1 Click "Preview".



Step2 Click right of mouse, you can set the size of previewing window.



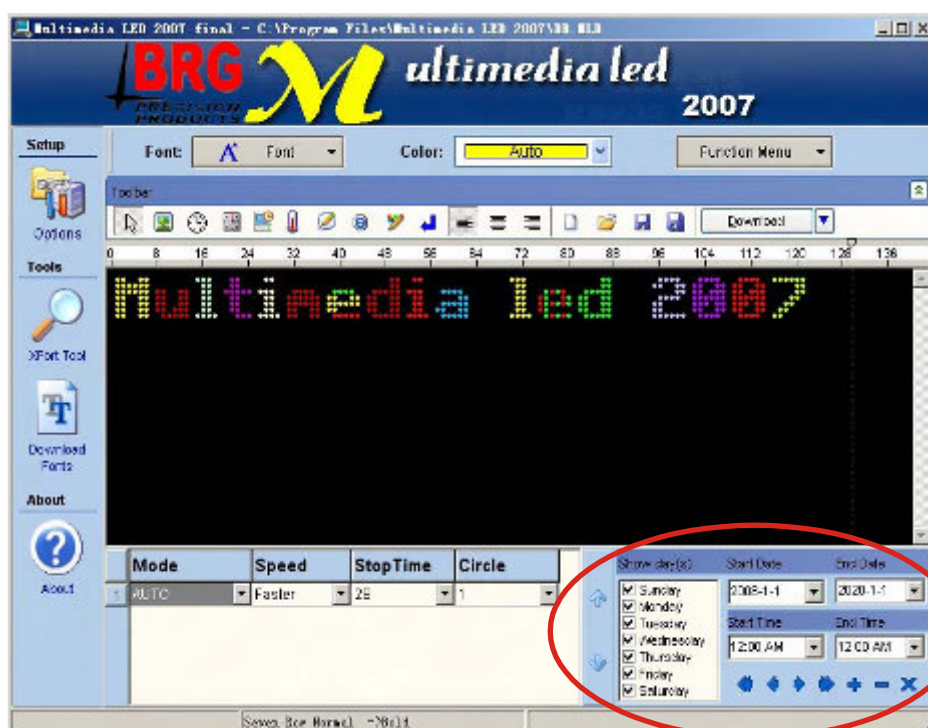
Step3 Click "Synchro Preview".



Step4 Click right of mouse, you can set the size of previewing window. And click "Exit", exit previewing.



Note: The preview function can be only in effect between start time/date and end time/date, also the show days.

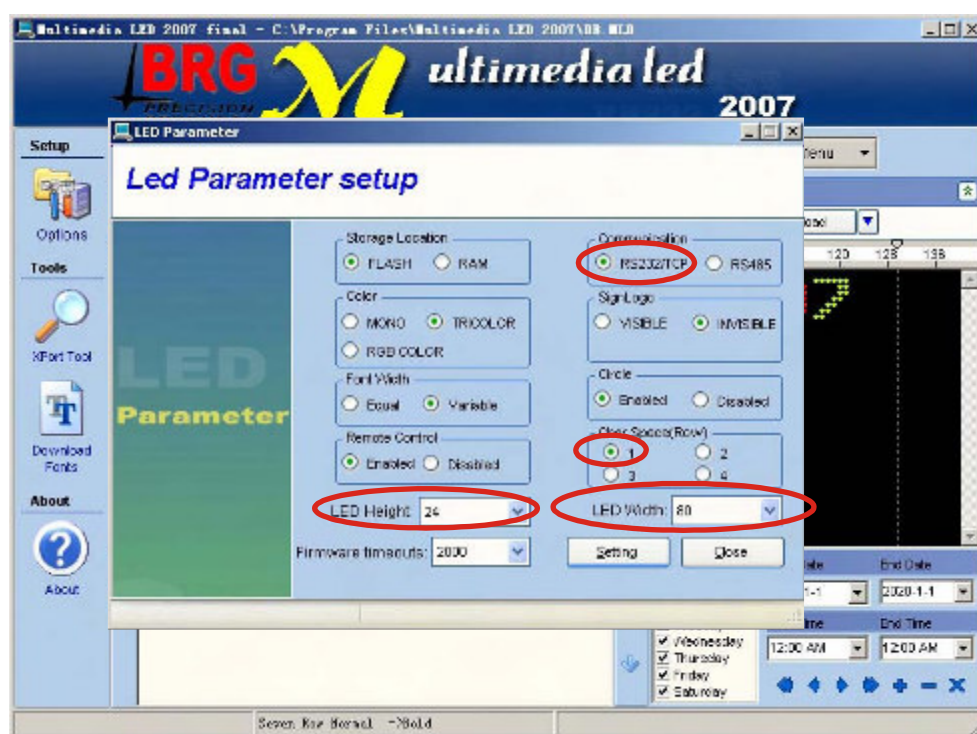


Send messages to sign (RS232 communication)

Step1 Connect the sign with pc ,see the connecting way in the below:



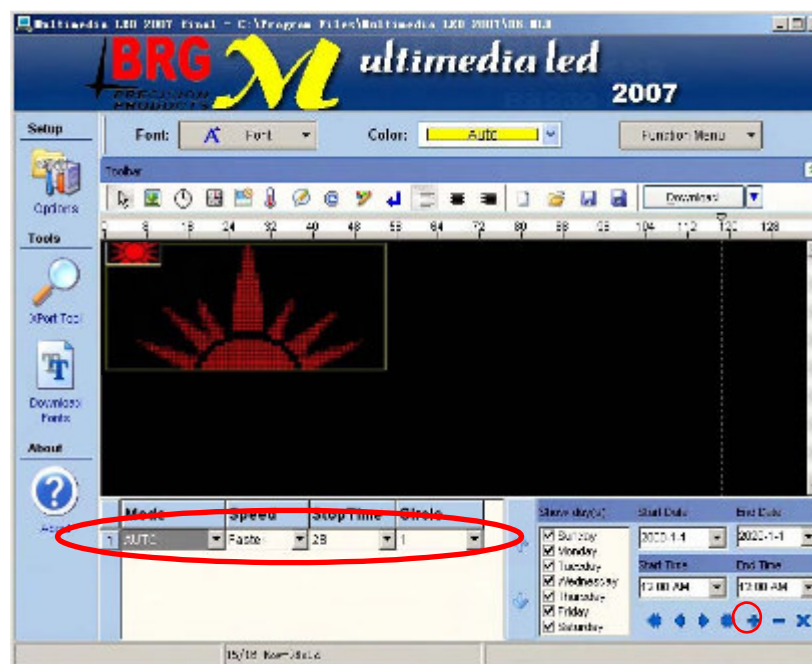
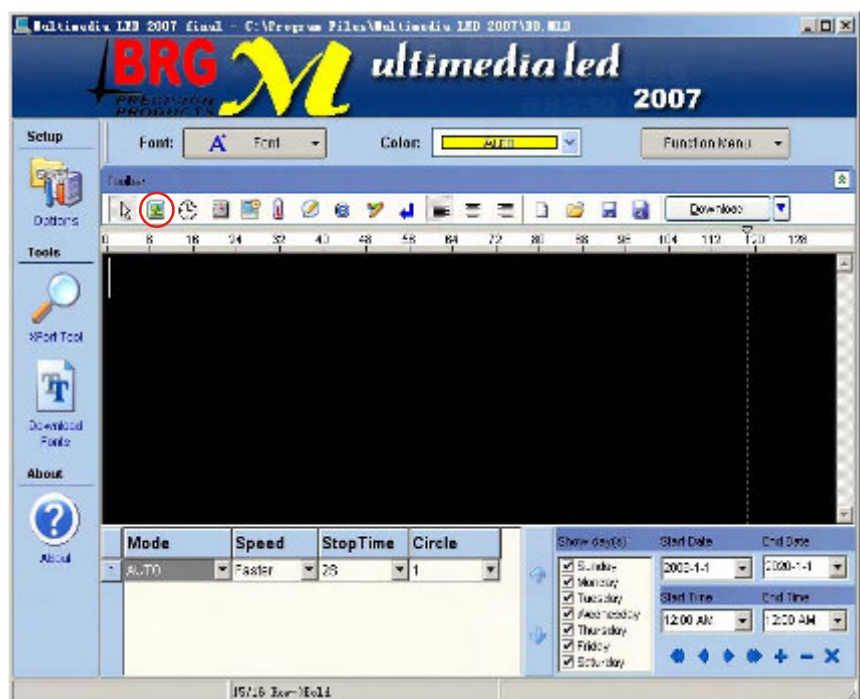
Step2 Click "CTRL+F3" if not Factory Configured.



1. Select "RS232/TCP"
2. Set up "LED Width" and "LED Height", (For example, a sign of 24X80, then LED Width : 80, LED Height : 24)
3. Select "Char Space (Row)" for "1".
4. Click "Setting" If appear "Serial Setting Parameter Successfully" then do the next, if not appear, then check the signs connection.

Step3 Insert a picture ".gif", (the picture's width and height less than or equal to 24*80 dots), click

Click If you want to send more than one picture to sign, you click

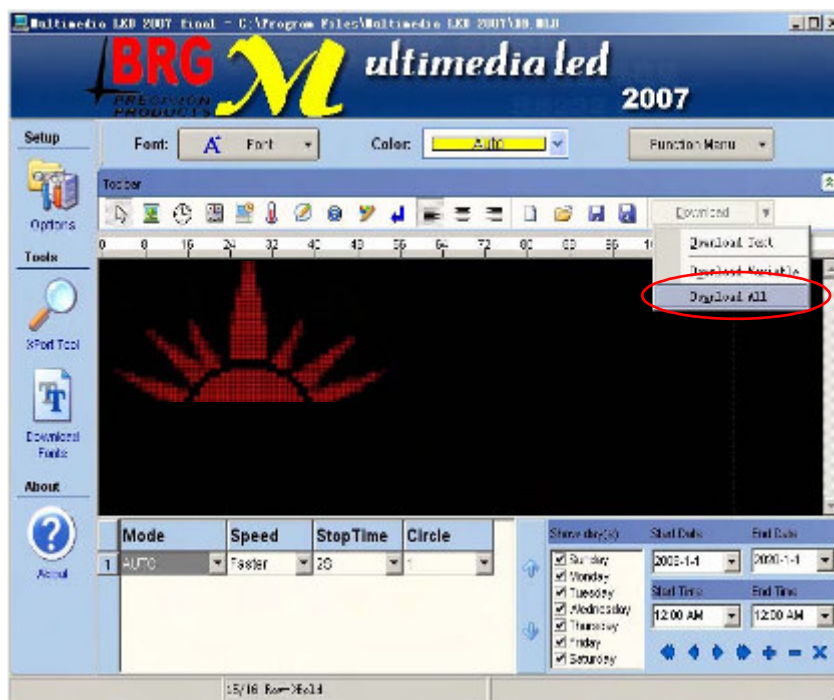
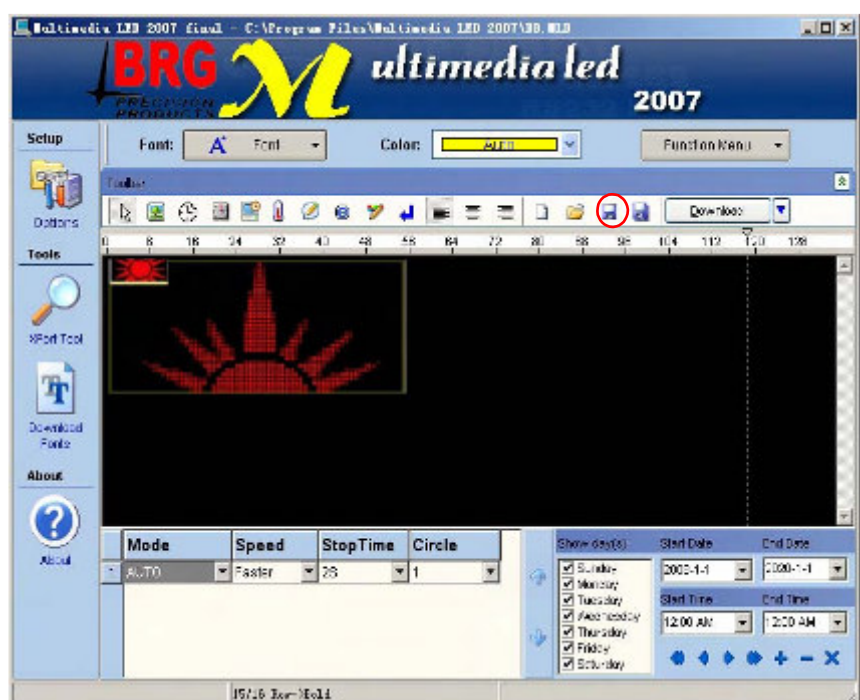


Note : the inserted picture less than the sign's size, if not, will influence the displayed effect.

Other messages' set up reference to manual.

Step4 Click

Step5 Click "Download All"



Send messages to group of signs (RS485 communication)

Notes : signs communication mode should be set at RS485

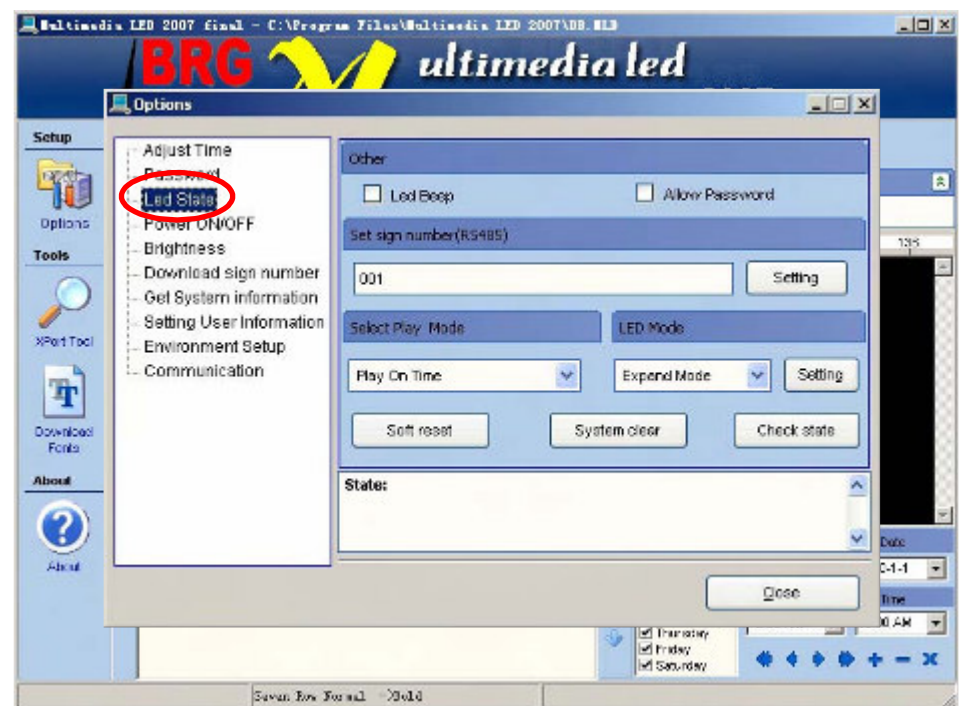
Step1 Connect signs, set up sign number, see the connecting way in the below :



Step2 Run software, click "options"



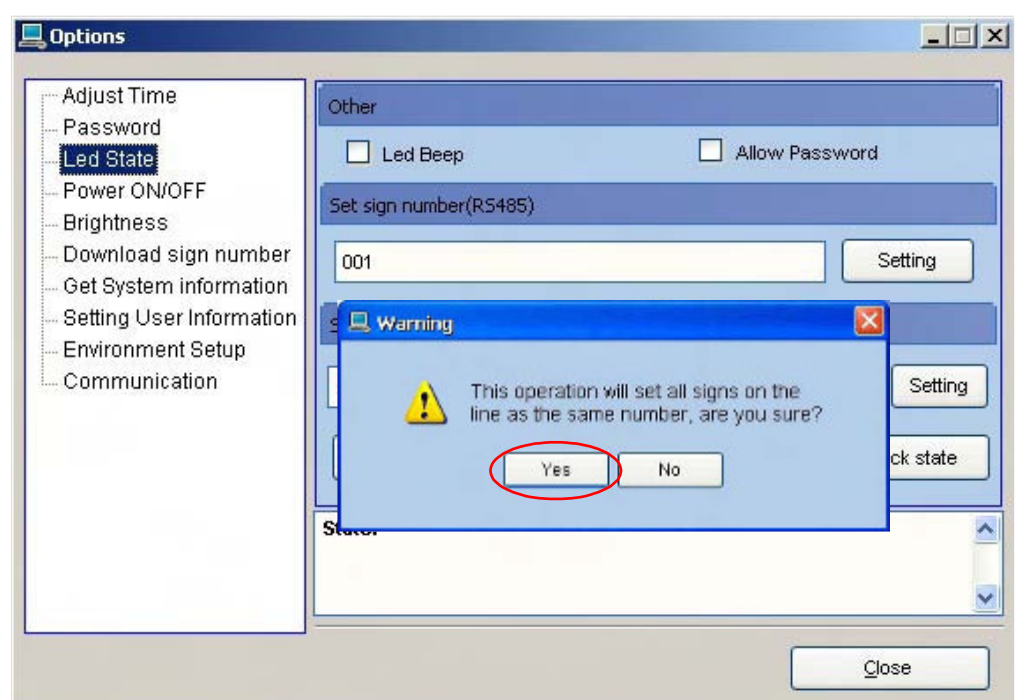
Step3 Click "Led State".



Step4 Set equipment number, then click "Setting".



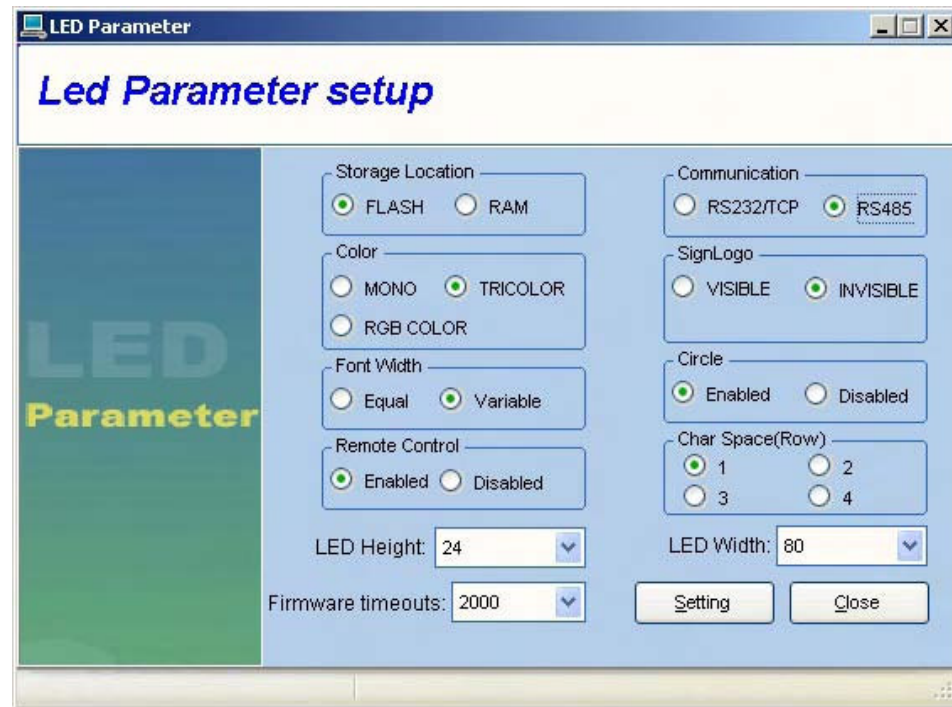
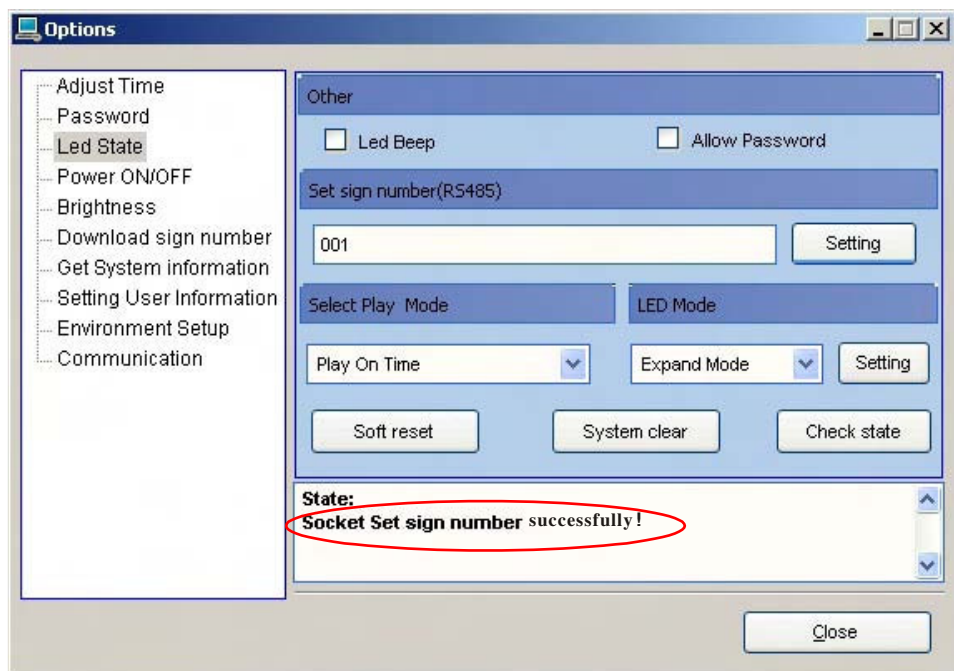
Step5 Click "Yes"



Response appears "Serial Set sign number successfully!", connect successfully, or should re-check the connection.



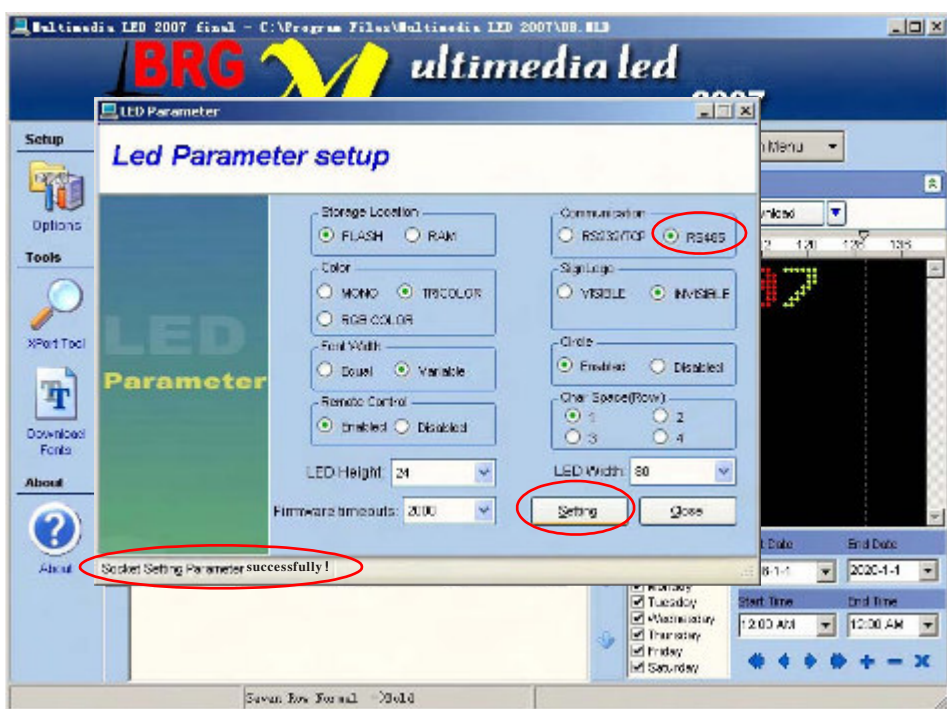
Click "CTRL+F3"



Note : must select RS485, if select RS232/TCP, will not send messages to multiple signs. All signs to be set to RS485.



Connect all the signs:



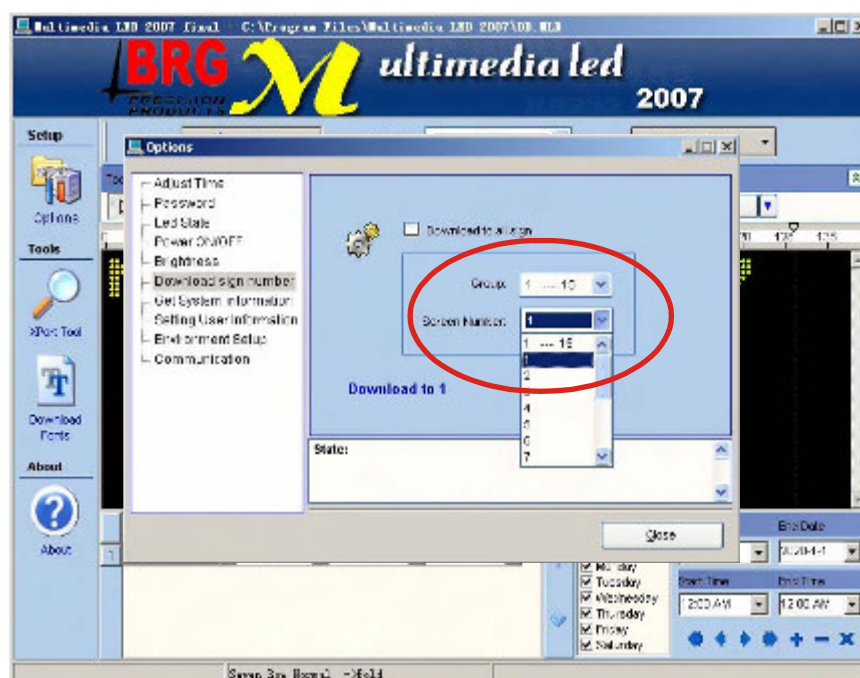
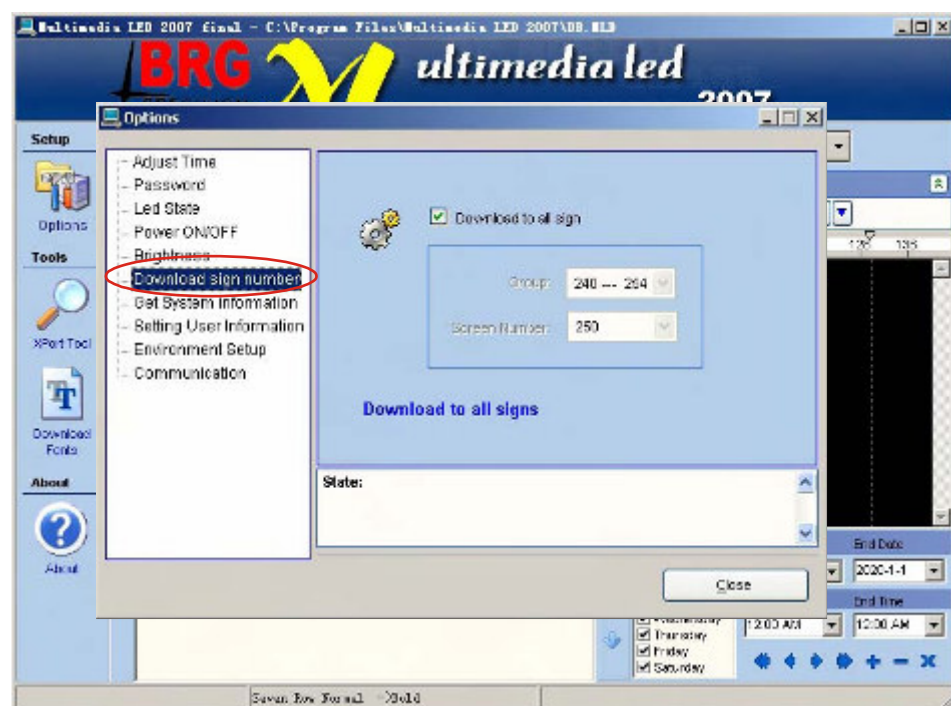
For example: two signs' connection (more than two is the same)



Click "Download to All LED", if you want to send messages to all signs.



Prior to setting the "screen number", you must set "Group number". For example: You want to display number 15. Considering number 15 is included in the Group 1-15, you should set "Group 1-15" first.

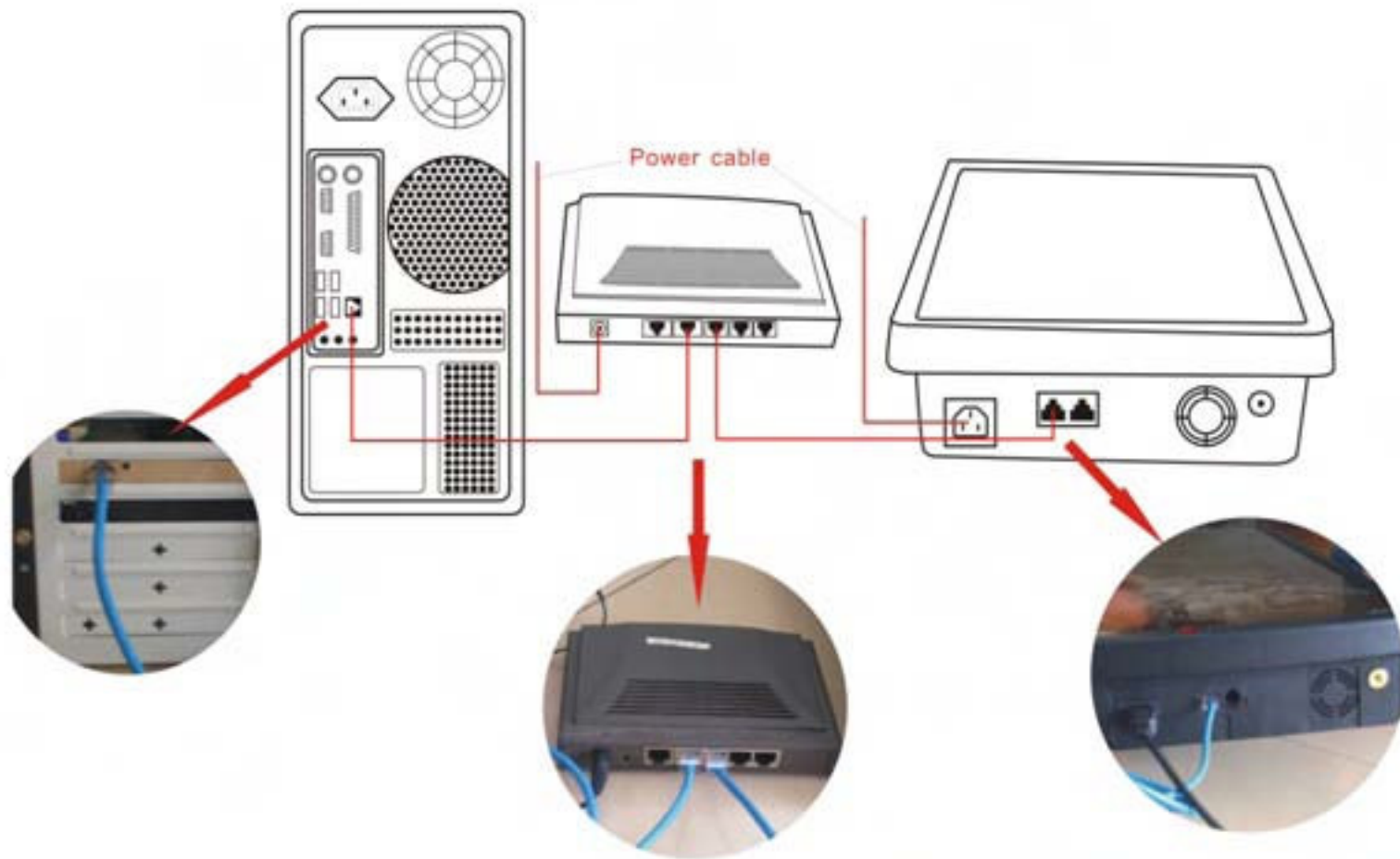


Click "Download"

Send messages to sign (TCP/IP communication)

一、signs connection:

For example: one PC, one Router, one led sign with internal X-port. See the connection method below:



Step1 Click "Xport Tool".

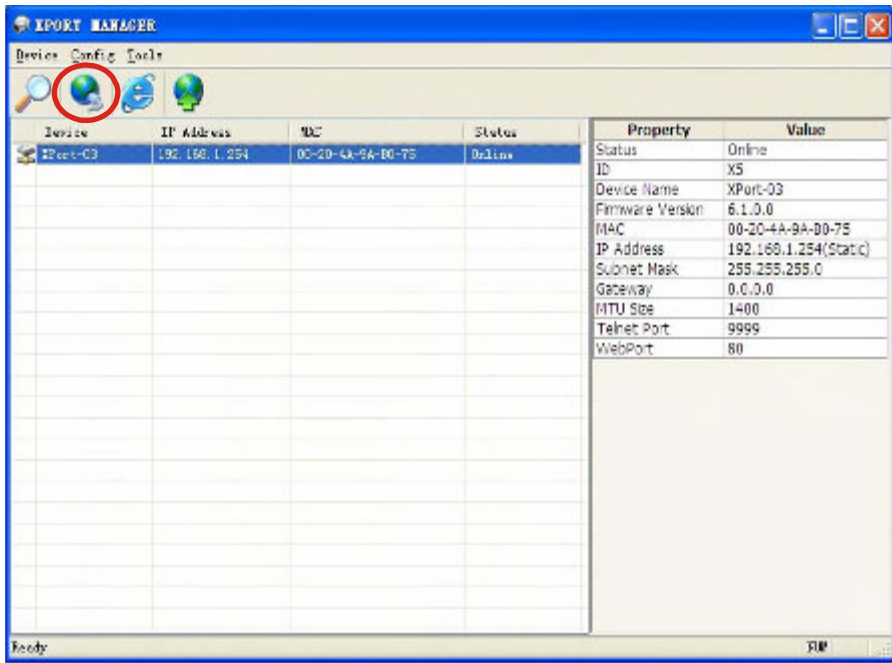
Step2 Click "🔍".



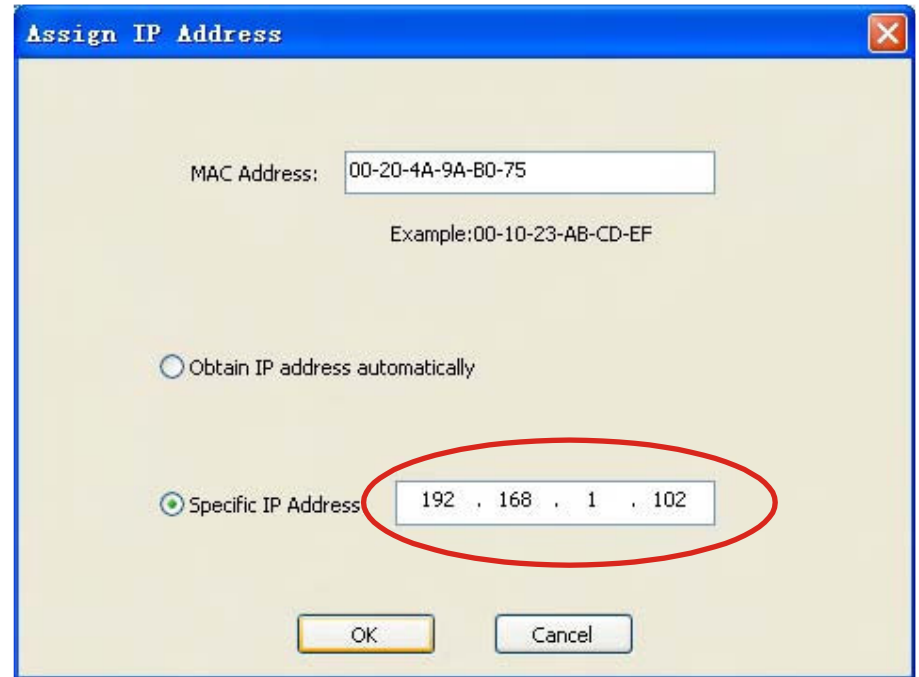
Note: after click "Search", if do not find the IP, there are two reasons:

- 1、 the connection of led sign, computer and Router is in error:
- 2、 At original state, the led sign has no assigns IP, so you must open the Router's DHCP dynamic allocation IP address function. (can refer to the Router operating instructions).

Step3 Click “”



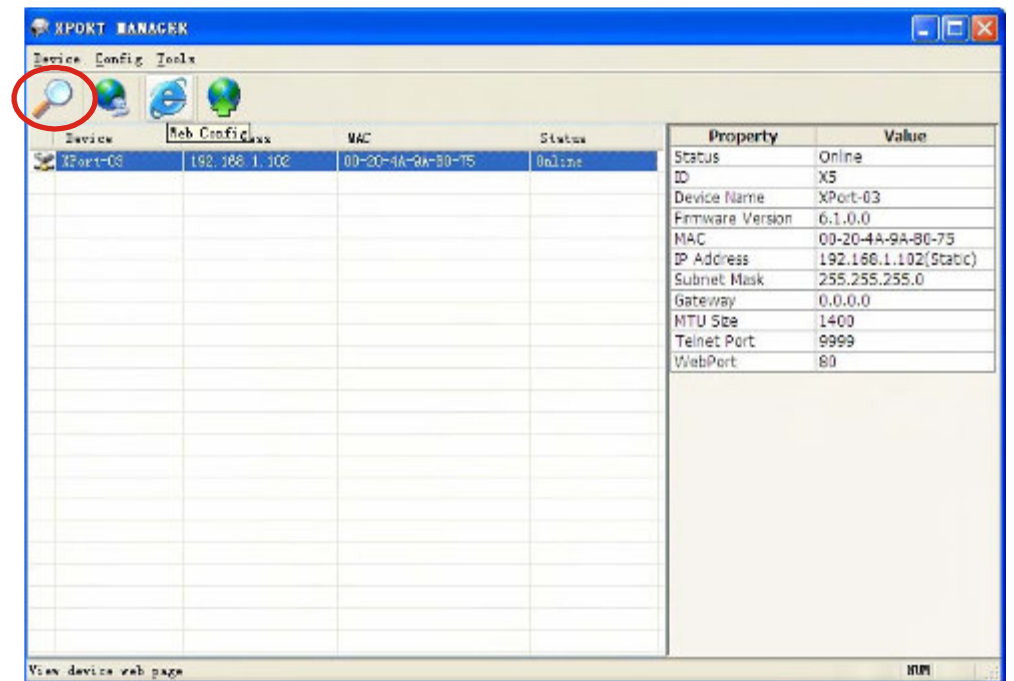
Modify IP



Click “OK”

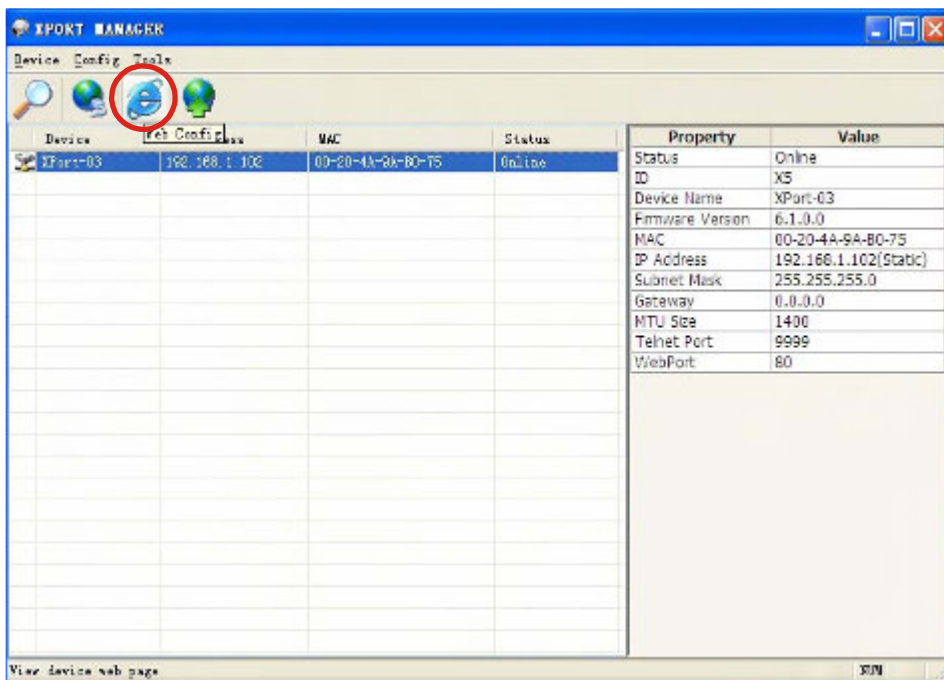


Click “” again

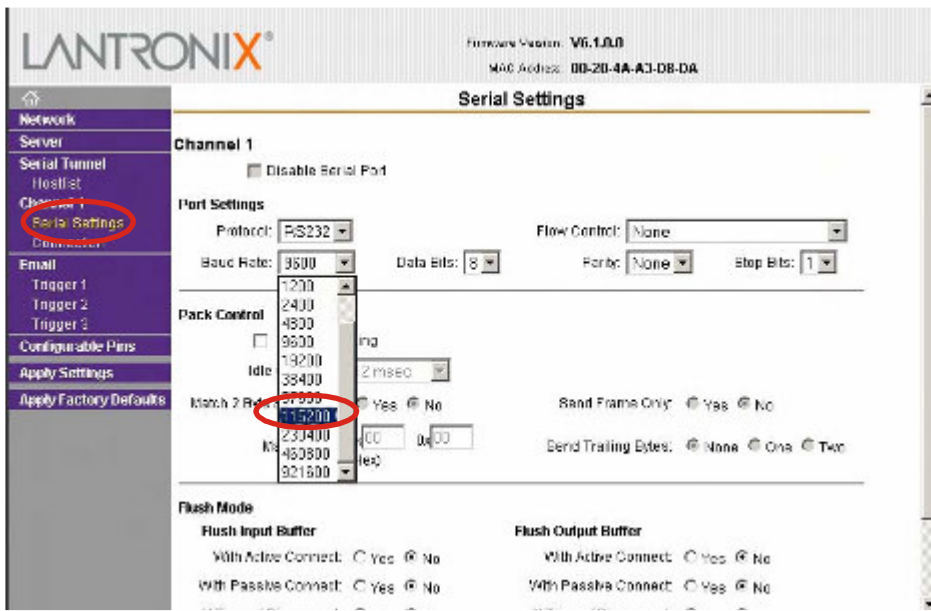


Step4 Modify Baud Rate, Click “”

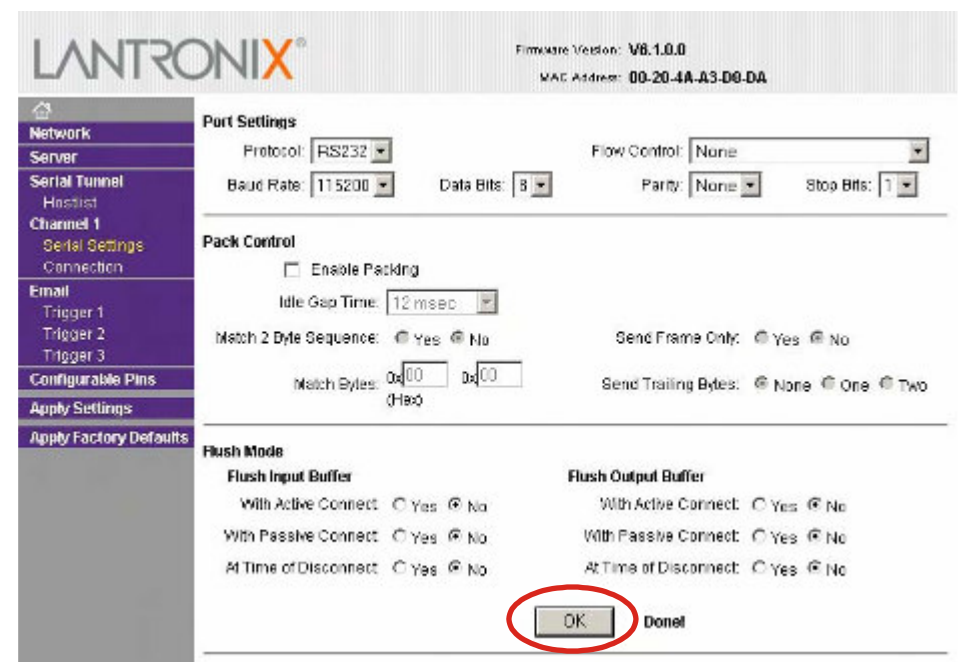
Click "OK"



Step5 Click “Serial Settings” Setup the Baud Rate: 115200 for Firmware versions 3.8H



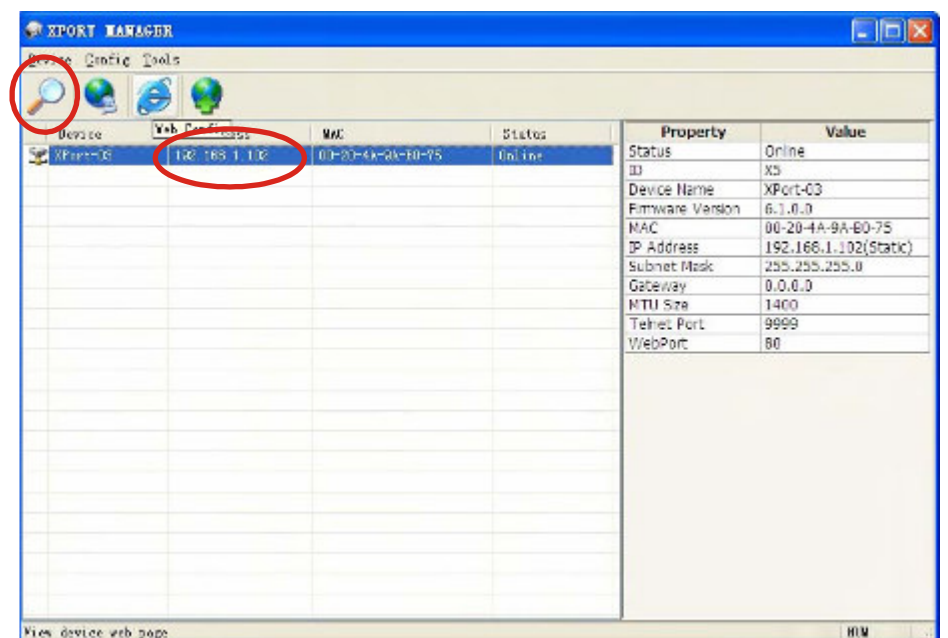
Step6 Click “ok”



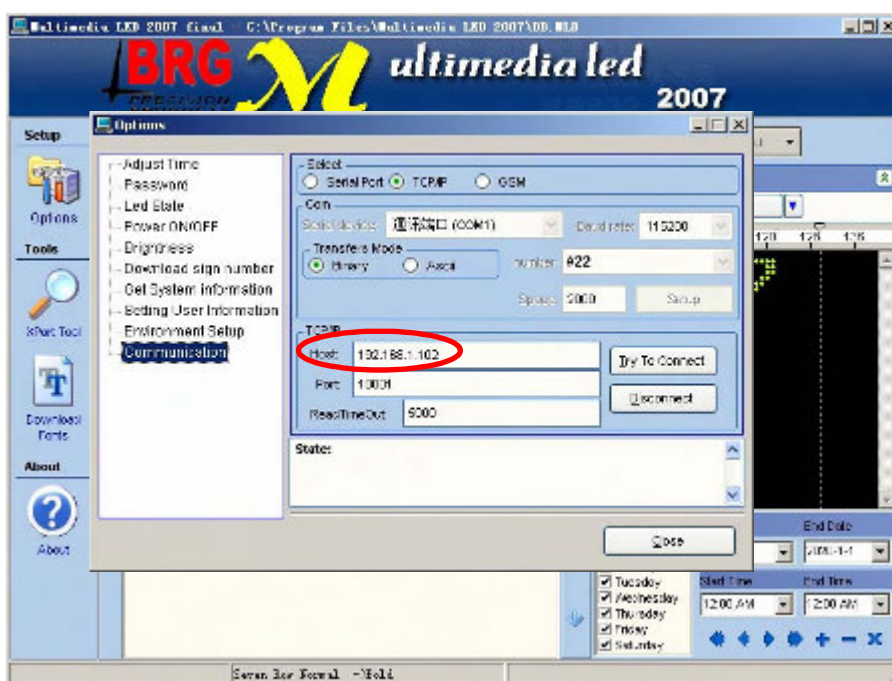
Step7 Click "Apply Settings"



Step8 Click "🔍", to search the IP, remember the IP



Step9 Click "Options", select "Communication", select "TCP/IP" communication.



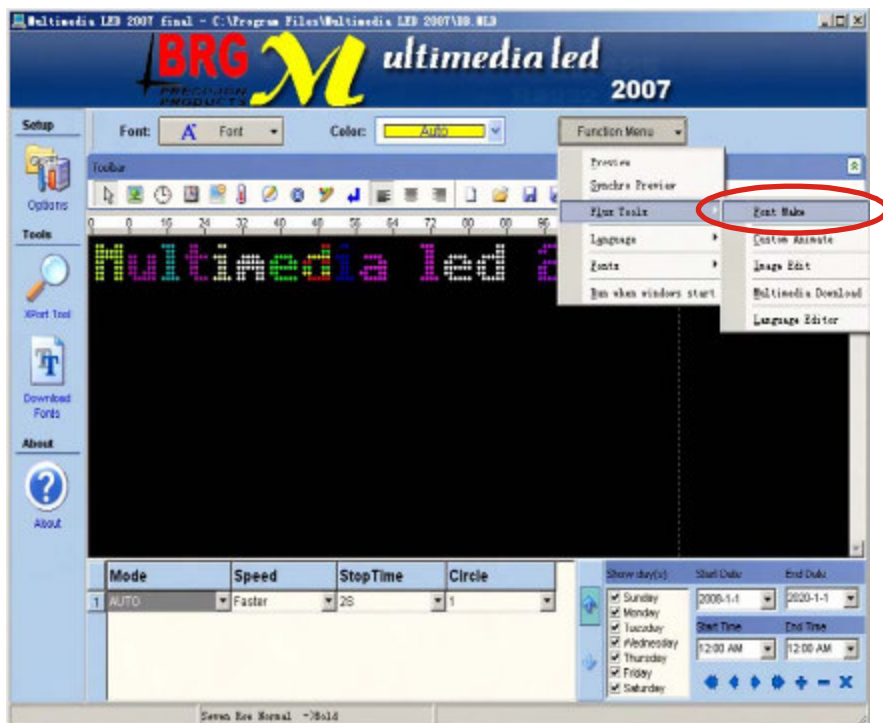
Input the IP in "Host", for example, at step8, get the IP "192.168.1.102", then click "OK".

Above the step has completed the led sign's communication establishment.

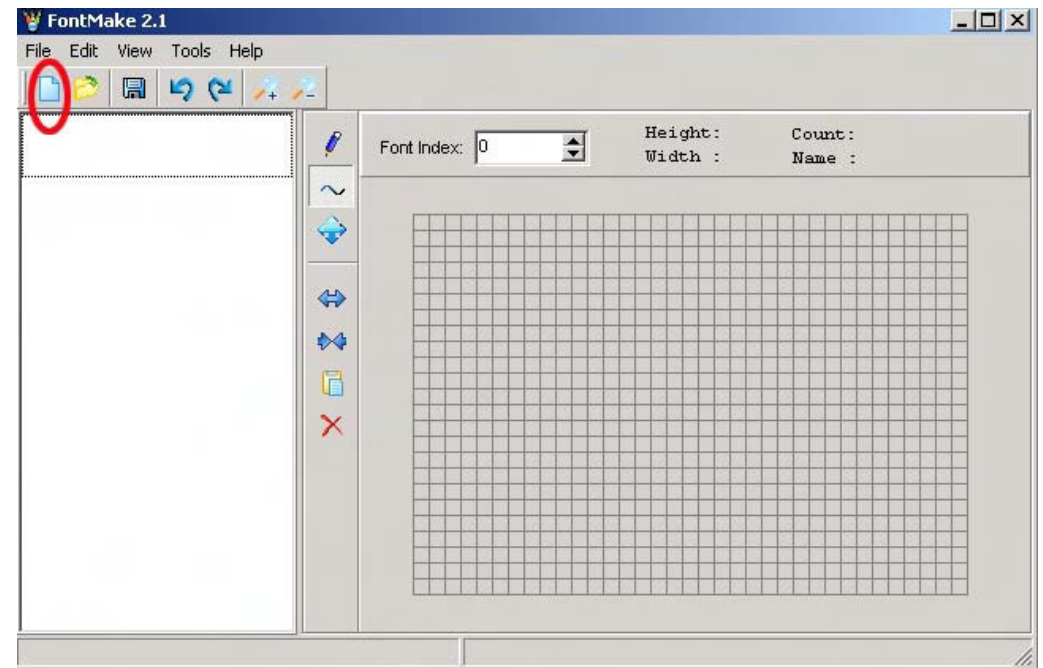
Step10 Check the messages, display mode, show days, and so on, then click "Download".

Make font

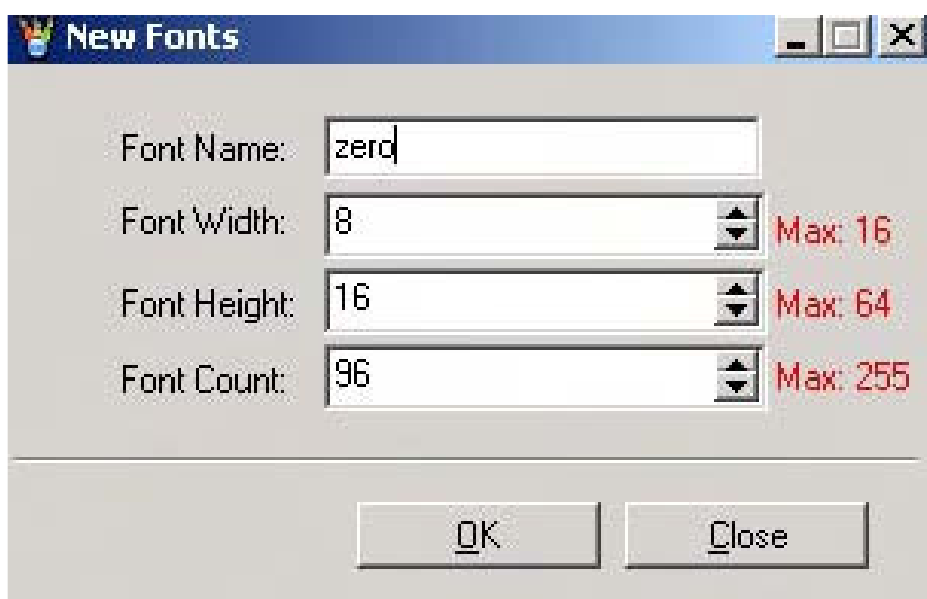
Step1 Click “Font Make”.



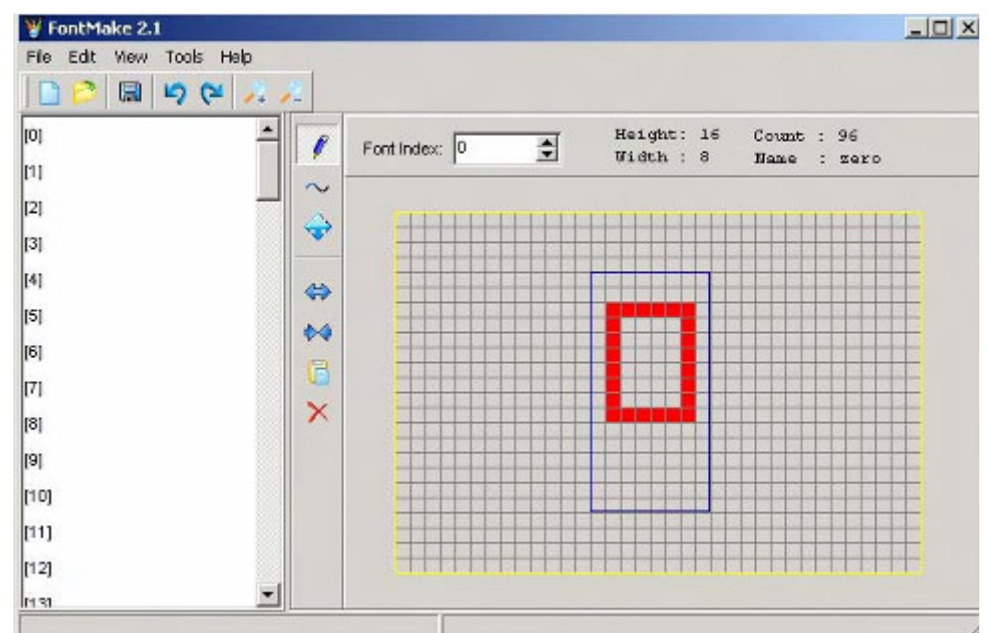
Step2 Click “New font files”.



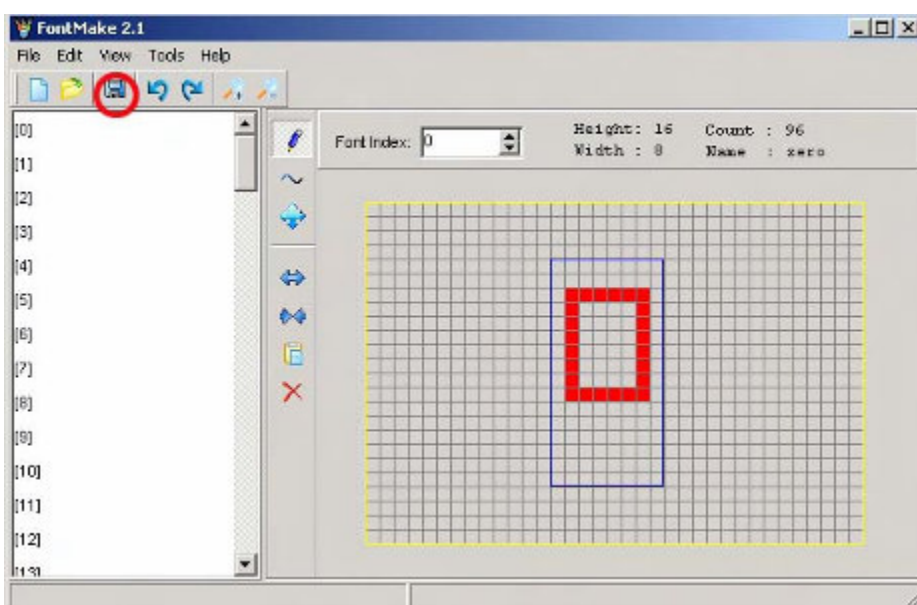
Step3 Set parameters for font. Click “OK”.



Step4 Draw font on the edit area.

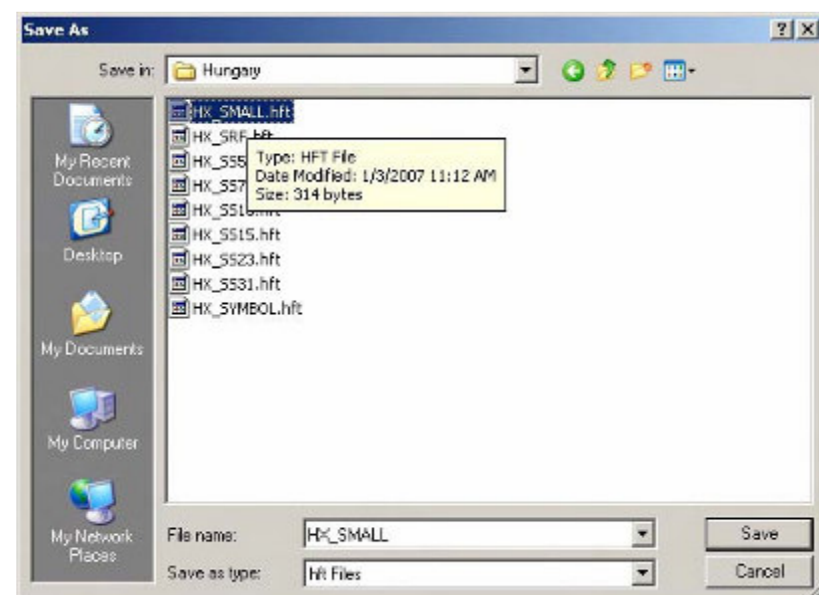


Step5 Click “Save”.



Step6 Save new font file to the folder where the original font of software locates on PC.

Note: Once you save a new font file onto PC, you must replace the old one.

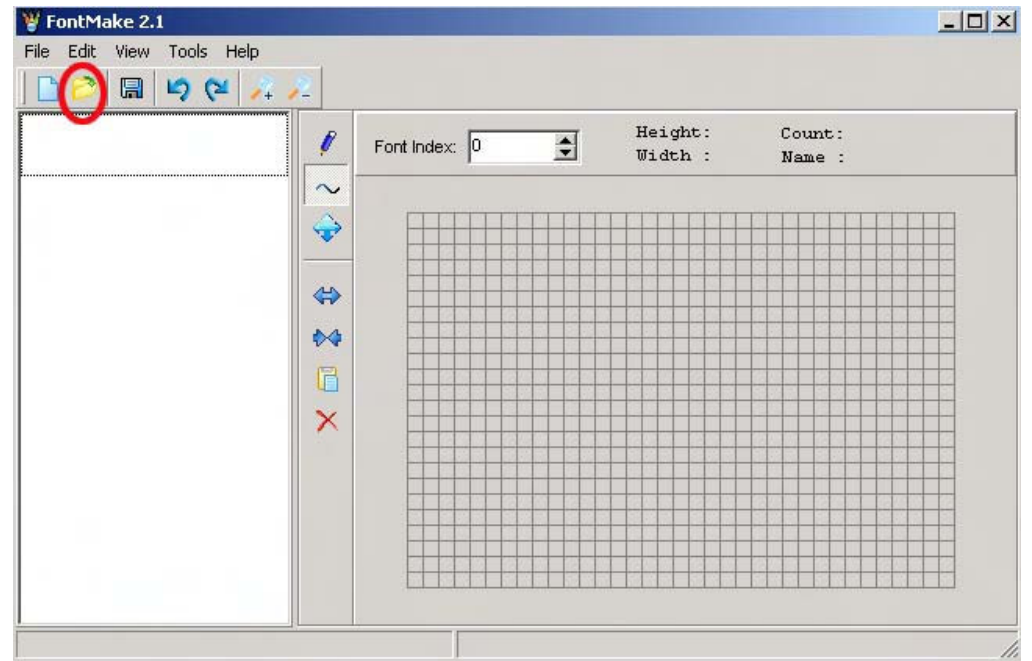


Note: The best way to make font is to modify the old ones, then save the modified one onto PC. Follow steps below:

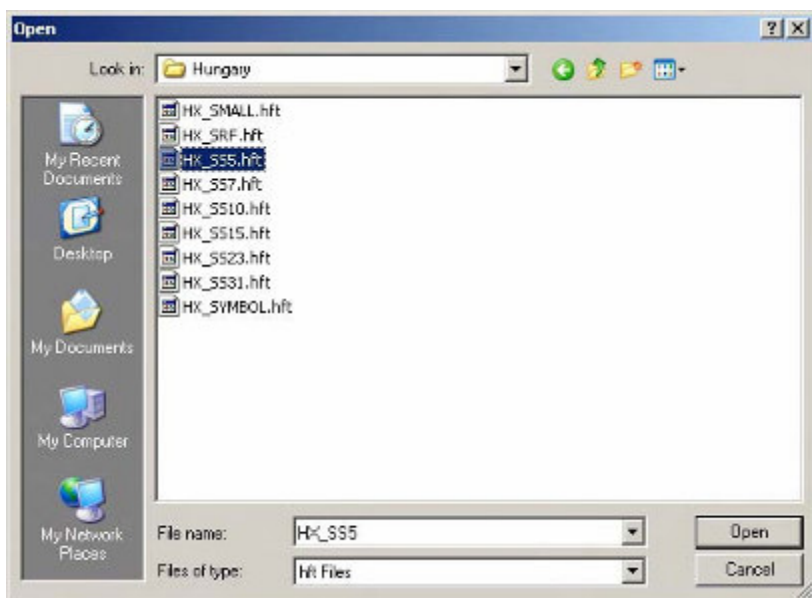
Step7 Click “Download Fonts” to download new font file onto PC.



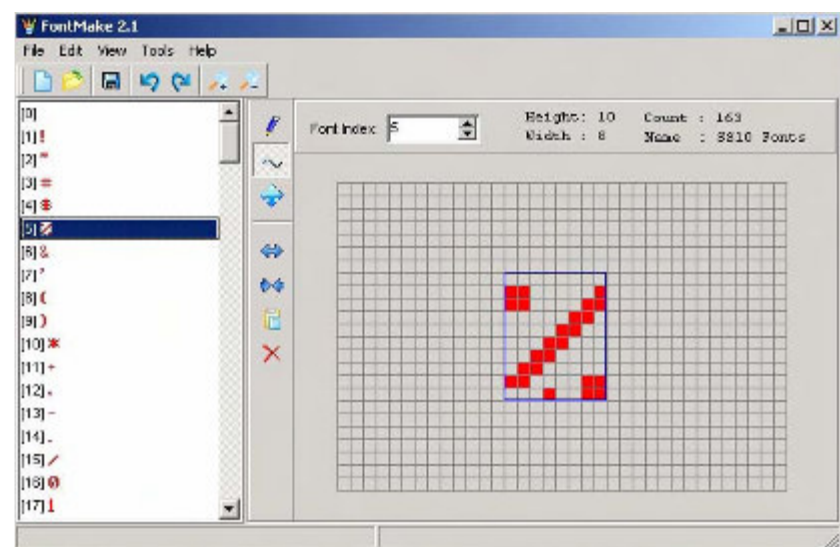
Step1 Click “Open”.



Step2 Open one of the existed font files



Step3 Select one and modify it, then click “Save”.



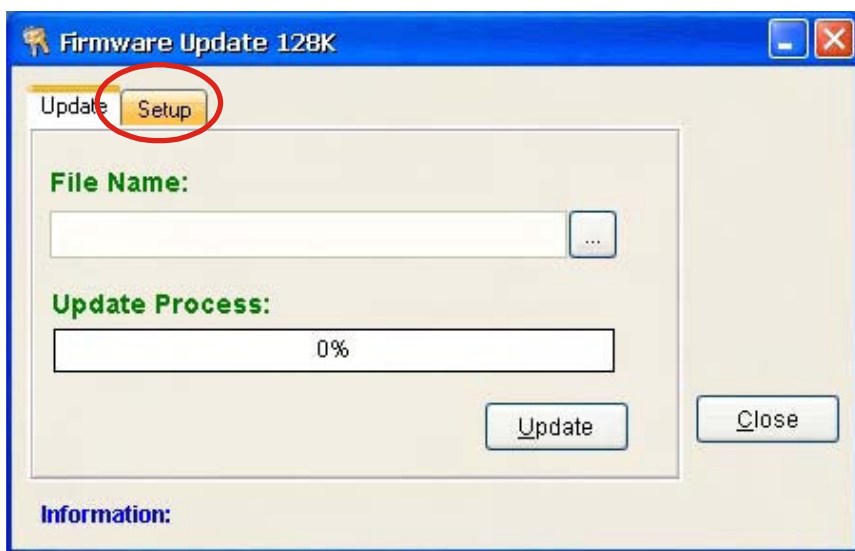
Update firmware: Very Rare Procedure, you should contact BRG Tech Support at 1-800-0220.

Step1 Connect sign with PC via communication cable.

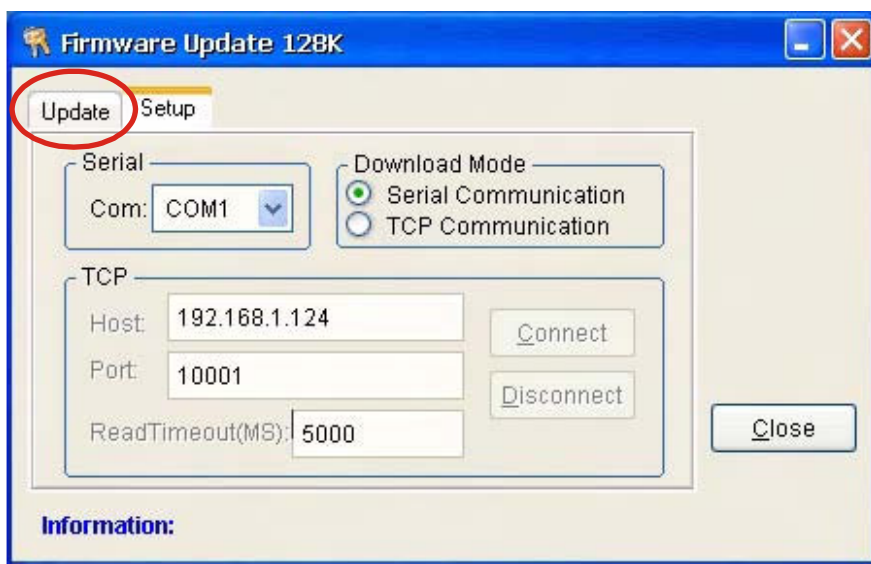
Note: If you want to update firmware using TCP/IP communication, you must connect sign to Router.



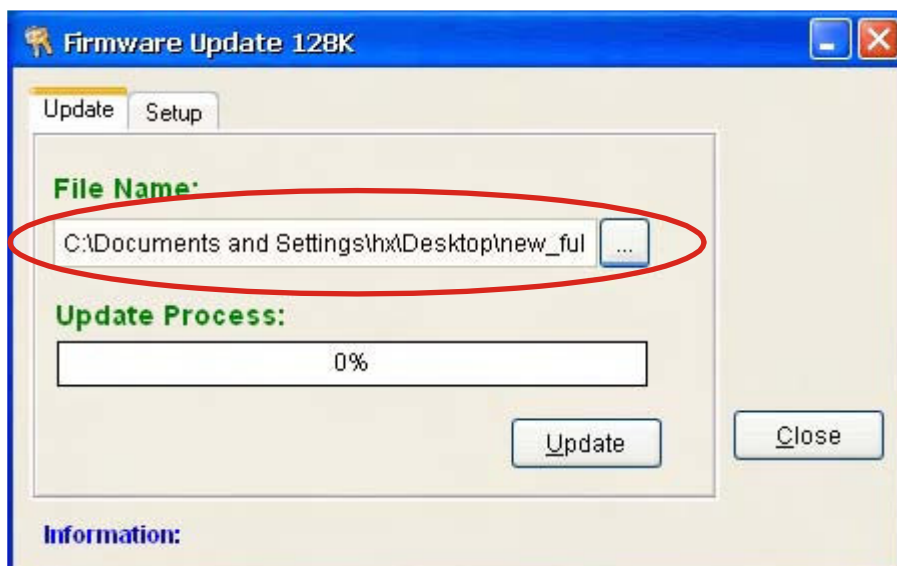
Step3 Click "Setup".



Step5 Click "Update".

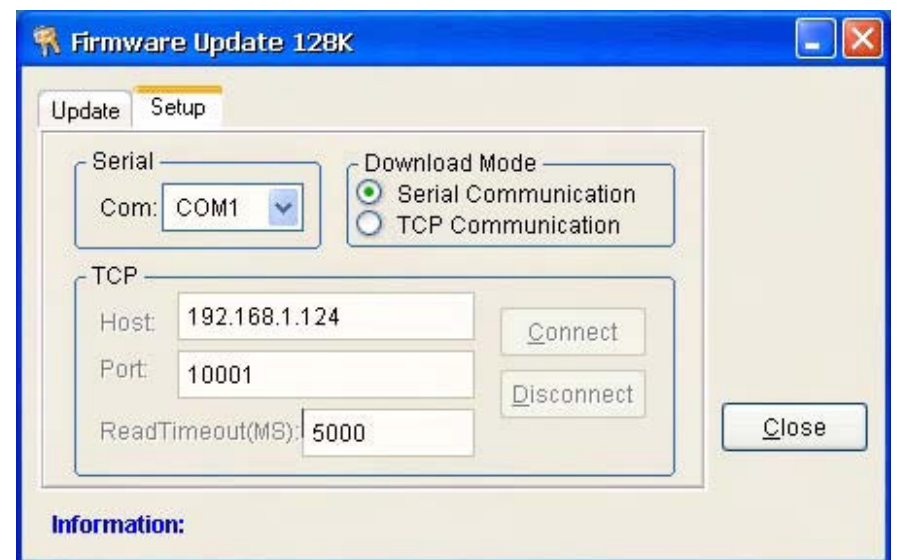


Step7 Open new firmware

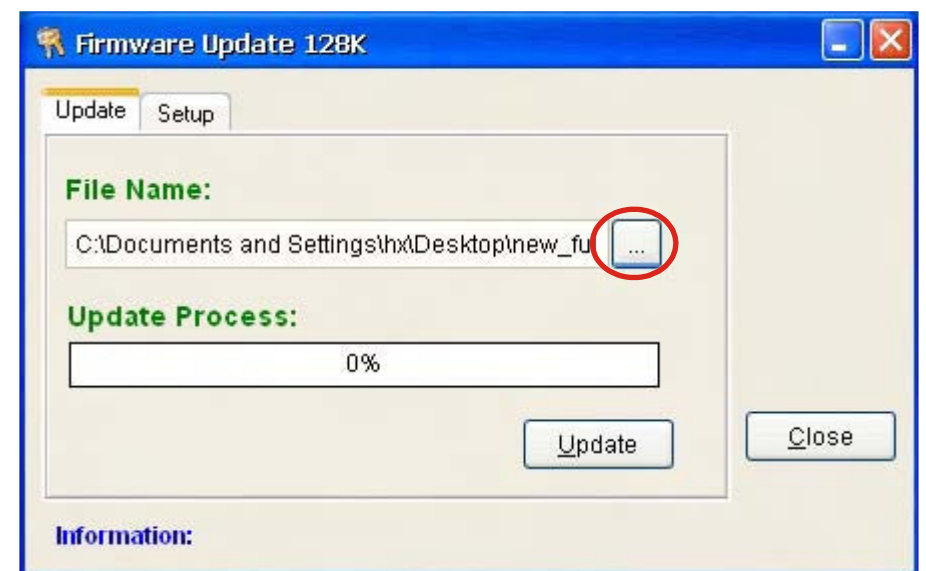


Step2 Double click  128k115200g.exe

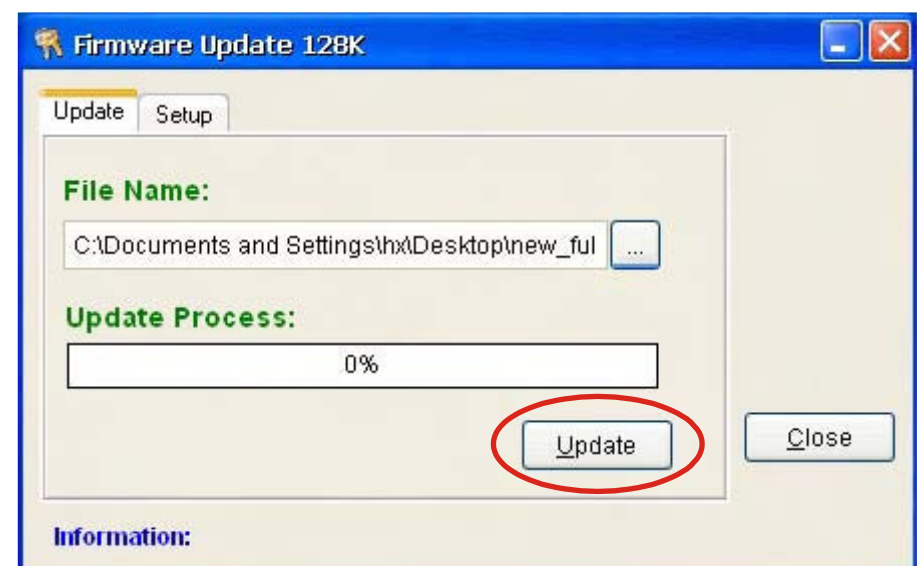
Step4 If you use RS232 communication, select "Serial Communication"; If you use TCP/IP communication, select "TCP communication".



Step6 Click "Browse".



Step8 Click "Update".



- Set 'circle' play (Repeat) of messages: This mode is setup on All BRG signs. **Only use Ctrl+F3 if instructed by BRG Tech Support.**

Select repeat times for every message .

Step1 Press "Ctrl+F3" on the keyboard, then set circle mode. "Enabled" means that messages have options of "repeat" times, from 1-9; "Disabled" means that messages only circle one time.

Step2

