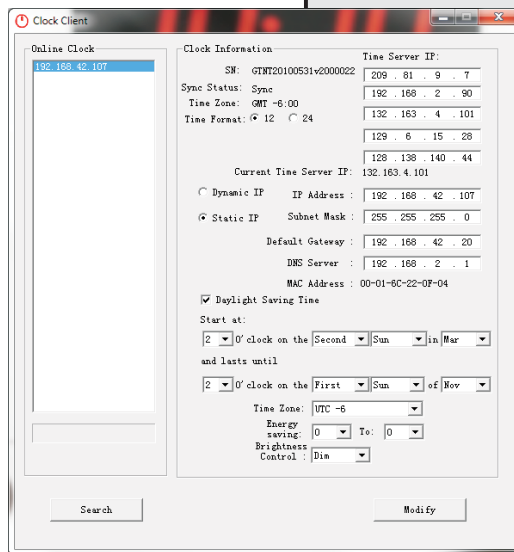


## POE440R Template & Installation instructions

1. To download the PoE configuration Software go to:  
[www.brgprecision.com/products/synchronized\\_clocks/poe4basic.php](http://www.brgprecision.com/products/synchronized_clocks/poe4basic.php)
2. When setting up the clocks for the first time, make sure that your clocks and computer is on the same subnet.
3. Open the software and discover your clock(s) each one should appear in the software column on the left with it's own IP address. Select each clock and setup the daylight savings time (DST) rules.

11.9"  
(302.2 mm)

1.1"  
(27.9 mm)



9.8"  
(248.9 mm)

3.4"  
(86.4 mm)

6.1"  
(154.9 mm)



# POE440R Template & Installation instructions

Top of Clock

1. To download the PoE configuration Software go to:  
[www.brgprecision.com/products/synchronized\\_clocks/poe4basic.php](http://www.brgprecision.com/products/synchronized_clocks/poe4basic.php)

Password: globaltime

2. When setting up the clocks for the first time, make sure that your clocks and computer are on the same subnet.

3. Open the software and discover your clock(s) each one should appear in the software column on the left with it's own IP address.



0.25" Dia

Online Clock

192.168.42.107

Clock Information

SN: GINT20100531v2000022

Sync Status: Sync

Time Zone: GMT -6:00

Time Format:  12  24

Time Server IP:

209 . 81 . 9 . 7

192 . 168 . 2 . 90

132 . 163 . 4 . 101

129 . 6 . 15 . 28

128 . 138 . 140 . 44

Current Time Server IP: 132.163.4.101

Dynamic IP IP Address : 192 . 168 . 42 . 107

Static IP Subnet Mask : 255 . 255 . 255 . 0

Default Gateway : 192 . 168 . 42 . 20

DNS Server : 192 . 168 . 2 . 1

MAC Address : 00-01-6C-22-0F-04

Daylight Saving Time

Start at:

2 o'clock on the Second Sun in Mar

and lasts until

2 o'clock on the First Sun of Nov

Time Zone: UTC -6

Energy saving: 0 To: 0

Brightness Control: Dim

Search Modify



Bottom of Clock