



663 Style Time Zone Clock



Model 663G - 1.8" time, 1.2" date, 0.75" zone labels, 3 zones



Model 663I - 1.8" time, 1.2" date, 0.75" zone labels, 5 zones

The 663 series time zone clocks have bar-segment LED time & date displays with white vinyl zone labels in the middle of each zone. 663 models can display between 2-10 time zones.

Each 663 clock comes standard with an OCXO oscillator, which is accurate to .06 seconds per year.

For easy clock management, an infrared (IR) remote control is included with every 663 model. You can specify a radio (RF) remote, if preferred for no additional charge.

Features:

- OCXO oscillator accurate to .06 seconds per year
- 1.8", 2.5" or 4.0" red bar segment LEDs for displaying time & date* (blue & green optional)
- 0.75", 1.0" or 1.5" white vinyl lettering for displaying zone names*
- Models that display from 1 to 10 separate time zones*
- 12 or 24 hour format
- DST and time zone offsets supported
- IR remote control standard or optional RF remote
- Black brushed Aluminum frame
- Multiple cord lengths available
- US, British, Australian or European plugs
- 100-240 VAC. 50-60 cycle power
- Available on GSA, contract GS-02F-0030U

*See individual model number for details.



Oven Controlled Crystal Oscillator (OCXO)

- Accurate to 2 PPB (parts per Billion) or .06 seconds per year or about 1 second in 20 years.
- 1 thousand times more accurate than most competing clocks
- Eliminates the need for GPS or Network time synchronization for

663 Style Time Zone Clocks



Model 663T - 2.5" time & date, 1.0" zone label, 8 zones with the G25W-R25W option

Model	Zones	Physical Positions	Display Time/Date	White Vinyl Label	Viewing Distance	Dimensions		
						H	W	D
663A	2	4	1.8"	0.75"	40 ft.	11.25	20.25	3.25
663B	3	6	1.8"	0.75"	40 ft.	11.25	30.25	3.25
663C	4	8	1.8"	0.75"	40 ft.	11.25	40.25	3.25
663D	5	10	1.8"	0.75"	40 ft.	11.25	50.25	3.25
663M	6	12	1.8"	0.75"	40 ft.	11.25	60.25	3.25
663N	7	14	1.8"	0.75"	40 ft.	11.25	70.25	3.25
663O	8	16	1.8"	0.75"	40 ft.	11.25	80.25	3.25
663P	9	18	1.8"	0.75"	40 ft.	11.25	90.25	3.25
663Q	10	20	1.8"	0.75"	40 ft.	11.25	96.25	3.25
663E	2	4	2.5"	1.00"	75 ft.	14.25	24.25	3.25
663F	3	6	2.5"	1.00"	75 ft.	14.25	36.25	3.25
663G	4	8	2.5"	1.00"	75 ft.	14.25	48.25	3.25
663H	5	10	2.5"	1.00"	75 ft.	14.25	60.25	3.25
663R	6	12	2.5"	1.00"	75 ft.	14.25	72.25	3.25
663S	7	14	2.5"	1.00"	75 ft.	14.25	84.25	3.25
663T	8	16	2.5"	1.00"	75 ft.	14.25	96.25	3.25
663I	2	4	4.0"	1.50"	100 ft.	18.25	30.25	3.25
663J	3	6	4.0"	1.50"	100 ft.	18.25	45.25	3.25
663K	4	8	4.0"	1.50"	100 ft.	18.25	60.25	3.25
663L	5	10	4.0"	1.50"	100 ft.	18.25	75.25	3.25
663U	6	12	4.0"	1.50"	100 ft.	18.25	90.25	3.25
663V	7	14	4.0"	1.50"	100 ft.	18.25	96.25	3.25

Color Options

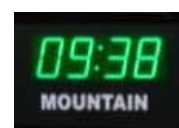
Red LEDs with white zone labels is standard



Blue LEDs with white zone labels is optional



Green LEDs with white zone labels is optional



Email: sales@brgproducts.com
 Web Site: <http://www.brgproducts.com>

Copyright 2016, BRG Precision Products, All rights reserved. Printed in the USA, #03 Spec Sheet Rev. 1.2.01.27.2016



600 N River Street • Derby, Kansas 67037
 800-295-0220 • 316-788-2000
 Fax: 316-788-7080